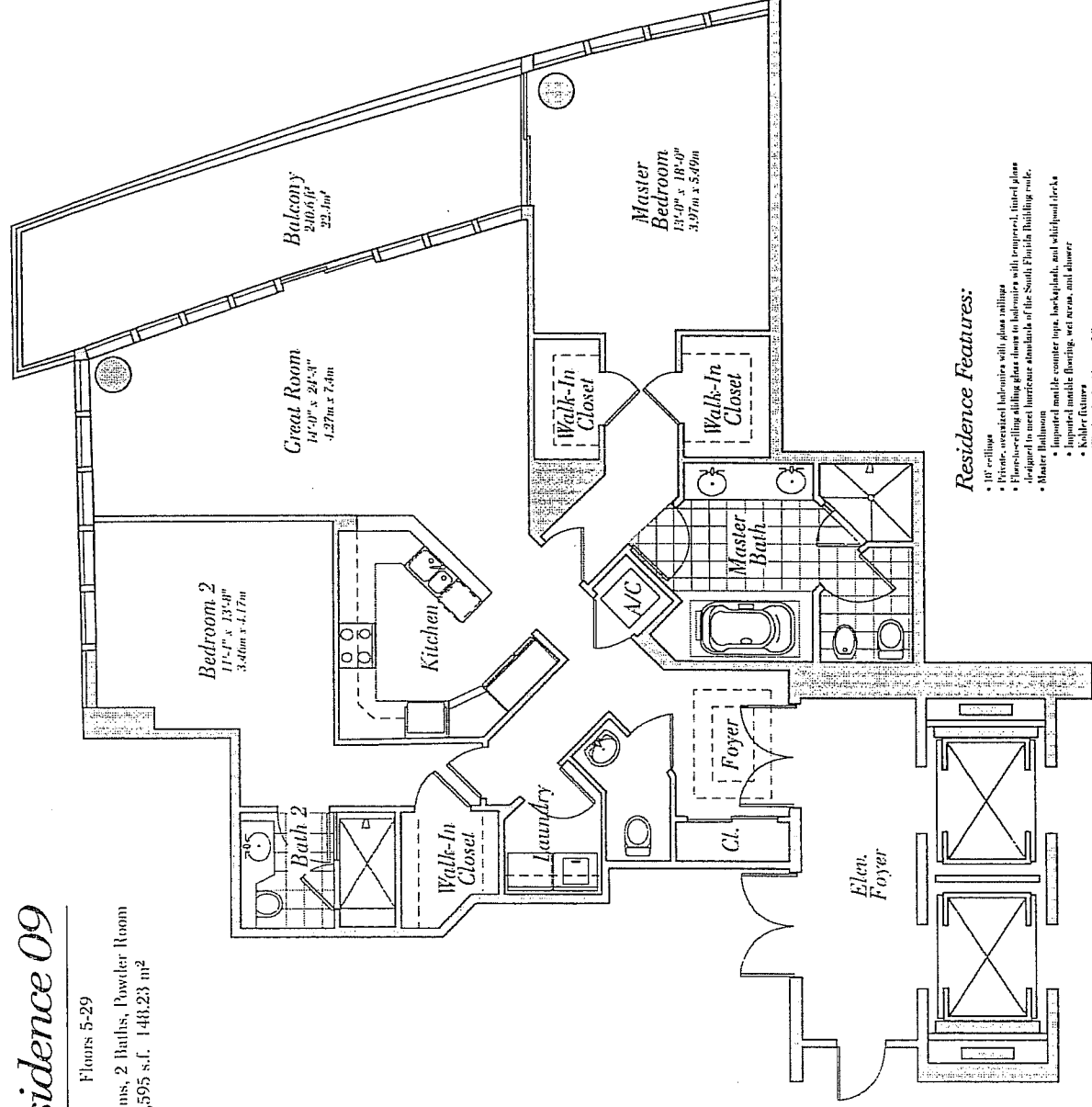


Residence 09

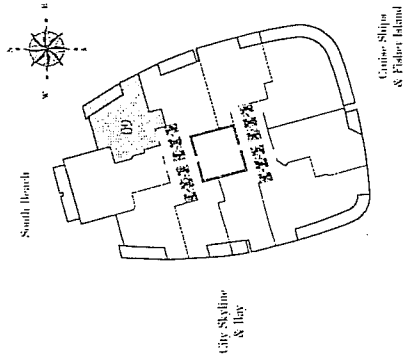
Floors 5-29

2 Bedrooms, 2 Baths, Powder Room
1,595 s.f. / 148.23 m²



Residence Features:

- 10' ceilings
- Private, oversized balconies with glass railings
- Floor-to-ceiling sliding glass doors in bedrooms with tempered, tinted glass designed to meet hurricane standards of the South Florida Building code.
- Master bathroom
- Impact resistant, counter tops, back splash, and whirlpool decks
- Impact resistant flooring, wet areas, and shower
- Kohler fixtures
- Walk-in tub with waterfall spout
- Empress bathroom vanity cabinets with high-gloss finish
- Scambora glass shower doors
- Full length mirror
- Second bathroom
- Impact resistant floor, wet areas, and shower
- Impact resistant tub and back splash
- Empress bathroom vanity cabinets with high-gloss finish
- Glass enclosure for shower stalls
- Powder Room fixtures
- Impact sink
- Porcelain sink
- Kitchen
 - Granite, imported European cabinetry
 - Granite countertops and back splash
 - Under-cabinet lighting
 - Variable speed, venting range hood
 - Subzero® 40" built-in refrigerator/freezer
 - Miele built-in oven
 - Miele electric cooktop
 - Miele built-in dishwasher
 - Miele built-in refrigerator
 - Wine cooler in cabinet
 - Wine cooler in cabinet
 - Single-lever faucet with pull-out spray
- Laundry
 - Misting Neptune front-load washer
 - Misting Neptune front load electric dryer
- Pre-wiring for multiple telephone lines
- Pre-wiring for security system
- Pre-wiring for cable-TV
- Left side-door wood entry doors
- Side-door wood interior doors



CONTINUUM
ON SOUTH BEACH