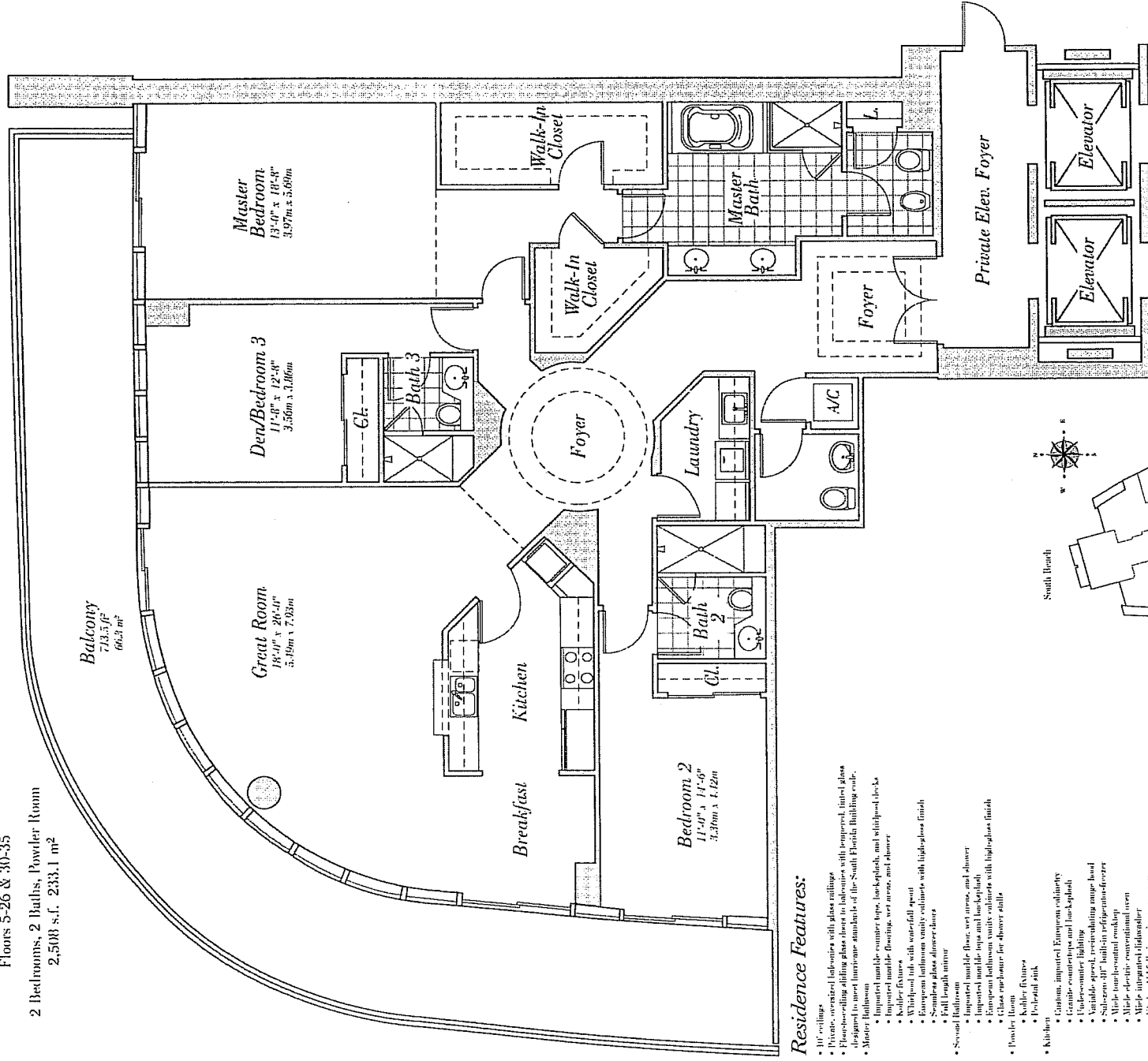


# Residence 06

Floors 5-26 & 30-35

2 Bedrooms, 2 Baths, Powder Room

2,508 s.f., 233.1 m<sup>2</sup>

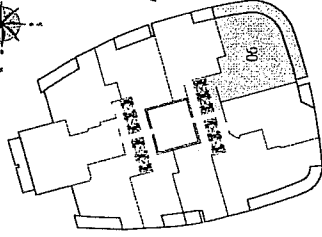


## Residence Features:

- 10' ceilings
- Private, oversized balconies with glass railings
- Floor-to-ceiling sliding glass doors to terraces, with tempered, tinted glass
- High-end finishes throughout, including granite and marble
- All bedrooms have air conditioning
- Bathrooms have air conditioning
- Imported marble counter tops, back-splash, and walk-in closets
- Imported marble flooring, wet areas, and shower
- Kohler fixtures
- Whirlpool tub with water-fall spout
- European bathroom vanity cabinets with high-gloss finish
- Seamless glass shower doors
- Full length mirror
- Second Bathroom
  - Imported marble floor, wet areas, and shower
  - Imported marble tops and back-splash
  - European bathroom vanity cabinets with high-gloss finish
  - Glass enclosure for shower stalls
- Powder Room
- Kohler fixtures
- Porcelain sink
- Kitchen
  - Clean, imported European cabinetry
  - Granite countertops and back-splash
  - 42" wide, stainless steel built-in refrigerator
  - 42" wide, stainless steel built-in refrigerator-freezer
  - Stainless steel built-in refrigerator-freezer
  - Marble-tile backsplash
  - Marble-tile integrated conventional oven
  - Marble-tile integrated dishwasher
  - Kitchen/sid full-size microwave oven
  - Wine chiller in select residences
  - Single-lever faucet with pull-out spray
- Lamely
  - Maytag Neptune front-load washer
  - Maytag Neptune front-load dryer
  - Pre-wiring for security system
  - Pre-wiring for cable TV
  - Full solid-core wood entry doors
  - Solid-core wood interior doors



South Beach



Atlantic Ocean  
& Gardens

City Skyline  
& Bay

Connoisseurs  
& Fisher Island

**CONTINUM**  
ON SOUTH BEACH