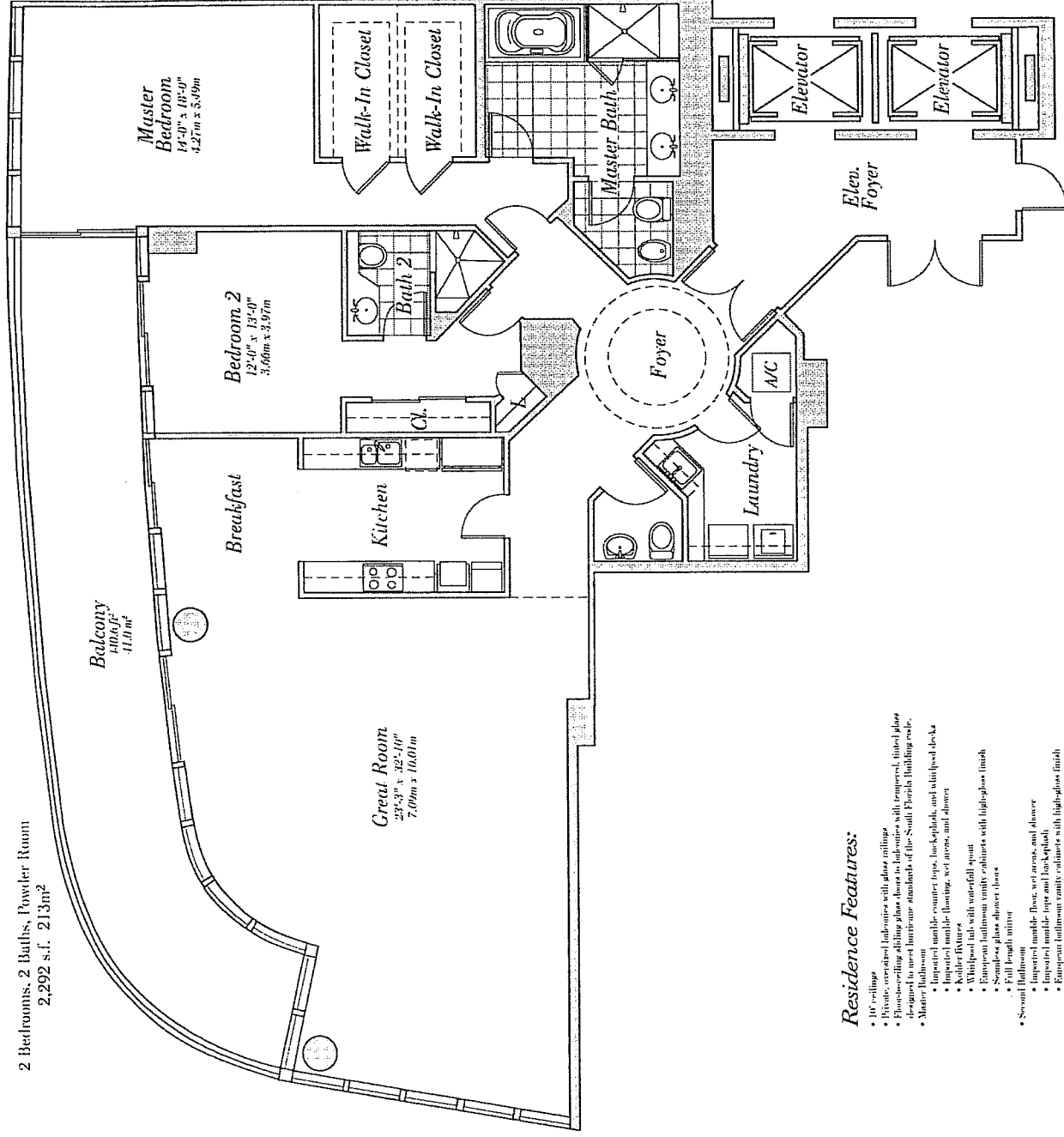


# Residence 04

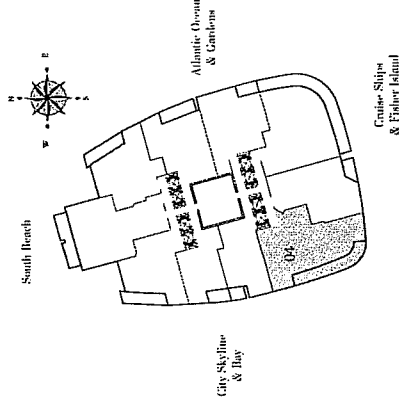
Floors 5-26

2 Bedrooms, 2 Baths, Powder Room  
2,292 s.f. 213m<sup>2</sup>



### Residence Features:

- 10' ceilings
- Picture size cabinet balconies with glass railings
- Floor-to-ceiling sliding glass doors to balconies with tempered, tinted glass designed to meet hurricane standards of the South Florida Building code.
- Master Bedroom
  - Impacted marble counter tops, back-splash, and whirlpool deck
  - Impacted marble flooring, wet areas, and shower
  - Whirlpool tub with waterfall spout
  - European fullness vanity cabinets with high-gloss finish
  - Soaker glass shower doors
  - Full size mirror
- Several balconies
  - Impacted marble floor, wet areas, and shower
  - Impacted marble tops and back-splash
  - European fullness vanity cabinets with high-gloss finish
  - Glass enclosure for shower stall
- Powder Room
  - Waller fixtures
- Kitchen
  - Custom, impacted European cabinetry
  - Impact-resistant and back-splash
  - Under counter lighting
  - Variable speed, retractable range hood
  - Subzero 48" built-in refrigerator/drawer
  - Micro hood-ventil cooktop
  - Micro electric conventional oven
  - Micro integrated dishwasher
  - KitchenAid full-size microwave oven
  - Wine chiller in select residences
  - Single-door pantry with pull-out open
- Laundry
  - Miele Neptune front-load washer
  - Miele Neptune front load electric dryer
- Pre-wiring for multiple telephone lines
- Pre-wiring for security systems
- Pre-wiring for cable TV
- Built-in/interior wood entry doors
- Solid-core wood interior doors



**CONTINUM**  
ON SOUTH BEACH