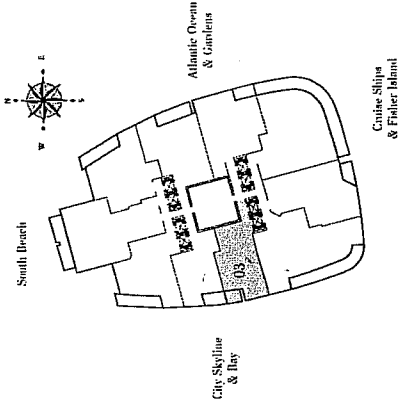
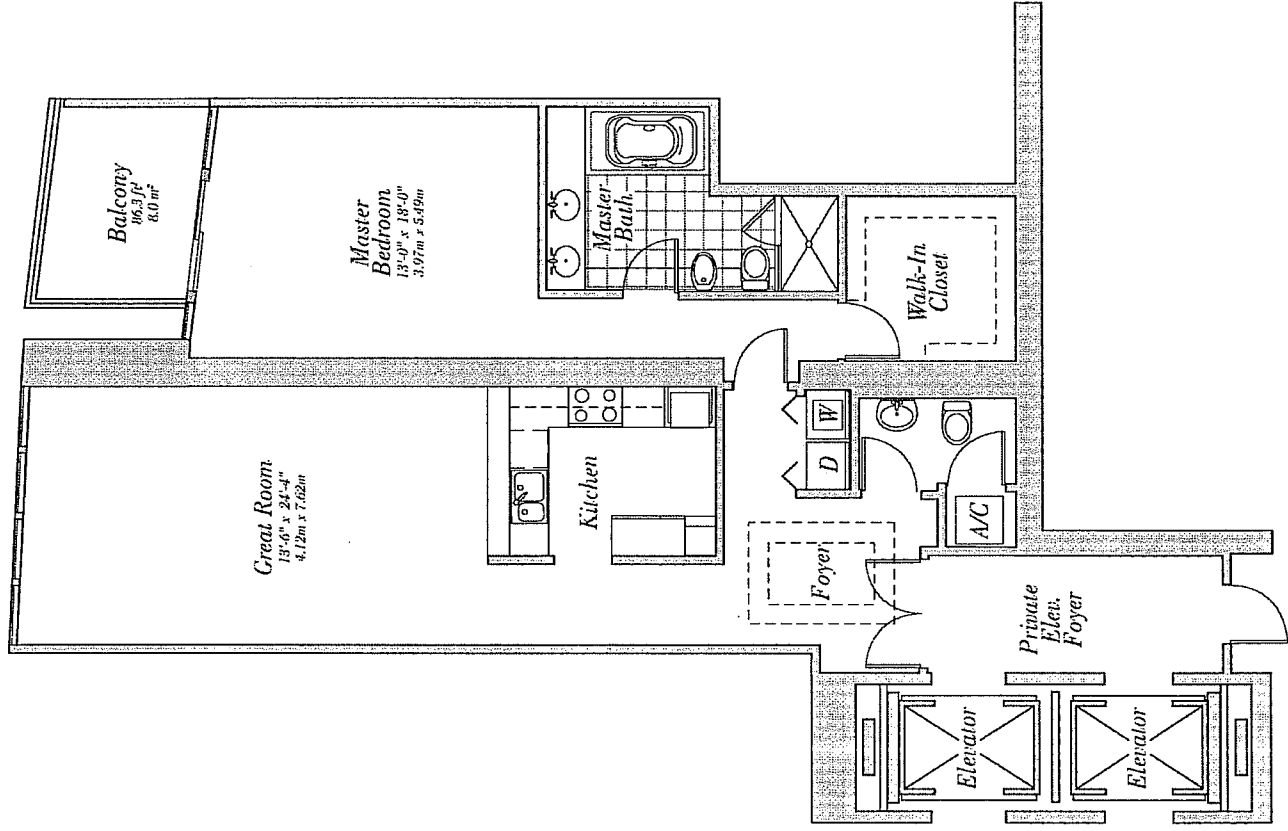


Residence 03

Floors 5-26

1 Bedroom, 1 Bath
1,365 s.f. 126.9m²



Residence Features:

- 10' ceilings
- Private, oversized balconies with glass railings
- Floor-to-ceiling sliding glass doors to balconies with tempered, tinted glass designed to meet hurricane standards of the South Florida Building code.
- Master Bedroom
 - Impact resistant window, track, back splash, and whirlpool deck
 - Impact resistant floating wet areas and shower
 - Kohler fixtures
 - Whirlpool tub with waterfall spout
 - European bathroom vanity cabinets with high-gloss finish
 - Stainless glass shower doors
 - Full length mirror
- Second Bathroom
 - Impact resistant floor, wet areas, and shower
 - Impact resistant top and back splash
 - Glass enclosure for shower stalls with high-gloss finish
 - Glass enclosure for shower stalls
- Powder Room
 - Kohler fixtures
 - Porcelain sink
- Kitchen
 - Custom, impact-rated European cabinetry
 - Granite countertop and back splash
 - Under-cabinet lighting
 - Variable speed, circulating range hood
 - Stainless steel built-in refrigerator/drawer
 - Impact resistant window and door
 - Maple electric range/hood unit
 - Maple integrated dishwasher
 - KitchenAid full-size microwave oven
 - Wine chiller in soffit refrigerator
 - Single-lever faucet with pull-out spray
- Laundry
 - Moving Neptune front-load washer
 - Moving Neptune front load electric dryer
 - Pre-wiring for multiple telephone lines
 - Pre-wiring for satellite systems
 - Pre-wiring for audio, TV
 - Back splash and impact resistant entry doors
 - Self-closing wood interior doors

CONTINUUM
ON SOUTH BEACH