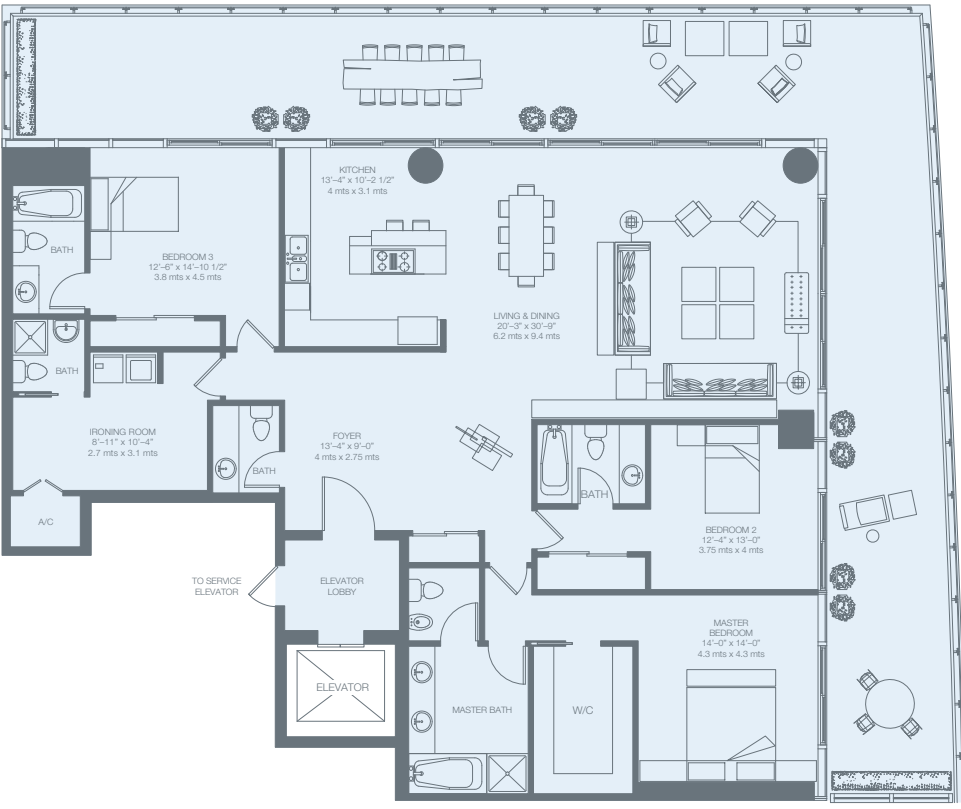
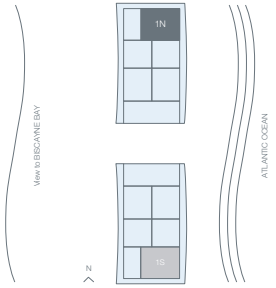



O1N

NORTH TOWER

2nd Floor	RESIDENCE	2,571 sq. ft. 238 sq. mt.
	TERRACE	1,189 sq. ft. 110 sq. mt.
PRIVATE PARKING	Total	3,760 sq. ft. 348 sq. mt.

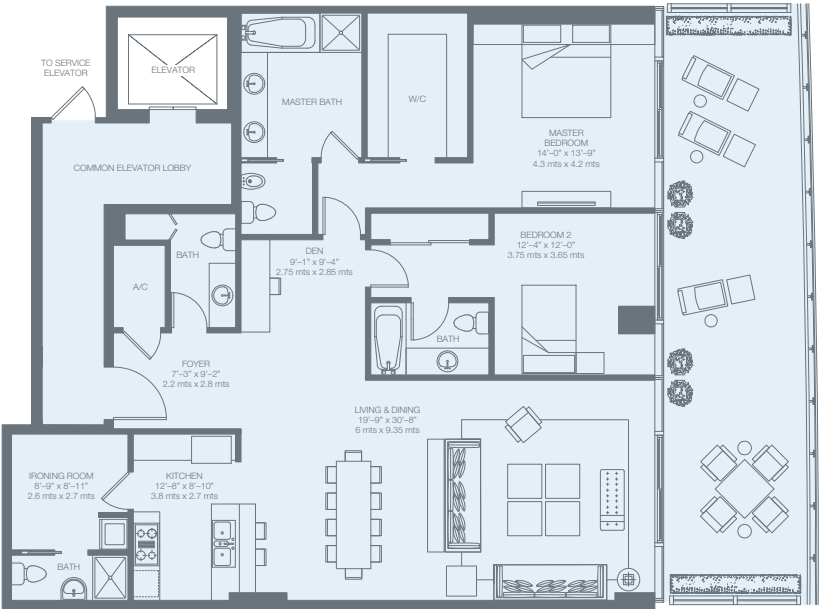


 Stated dimensions are measured to the exterior boundaries of the exterior walls and the centerline of interior demising walls and in fact vary from the dimensions that would be determined by using the description and definition of the "Unit" set forth in the Declaration (which generally only includes the interior airspace between the perimeter walls and excludes interior structural components). For the square footage of the "Unit" calculated in the manner set forth in the Declaration, see Exhibit "3" to the Declaration. Additionally, measurements of rooms set forth on any floor plan are generally taken at the greatest points of each given room (as if the room were a perfect rectangle), without regard for any cutouts. Accordingly, the area of the actual room will typically be smaller than the product obtained by multiplying the stated length times width. All dimensions are approximate, and all floor plans and development plans are subject to change.

O2N

NORTH TOWER

2nd Floor	RESIDENCE	1,879 sq. ft. 174 sq. mt.
	TERRACE	496 sq. ft. 46 sq. mt.
PRIVATE PARKING	Total	2,375 sq. ft. 220 sq. mt.



Stated dimensions are measured to the exterior boundaries of the exterior walls and the centerline of interior demising walls and in fact vary from the dimensions that would be determined by using the description and definition of the "Unit" set forth in the Declaration (which generally only includes the interior airspace between the perimeter walls and excludes interior structural components). For the square footage of the "Unit" calculated in the manner set forth in the Declaration, see Exhibit "3" to the Declaration. Additionally, measurements of rooms set forth on any floor plan are generally taken at the greatest points of each given room (as if the room were a perfect rectangle), without regard for any cutouts. Accordingly, the area of the actual room will typically be smaller than the product obtained by multiplying the stated length times width. All dimensions are approximate, and all floor plans and development plans are subject to change.

03N

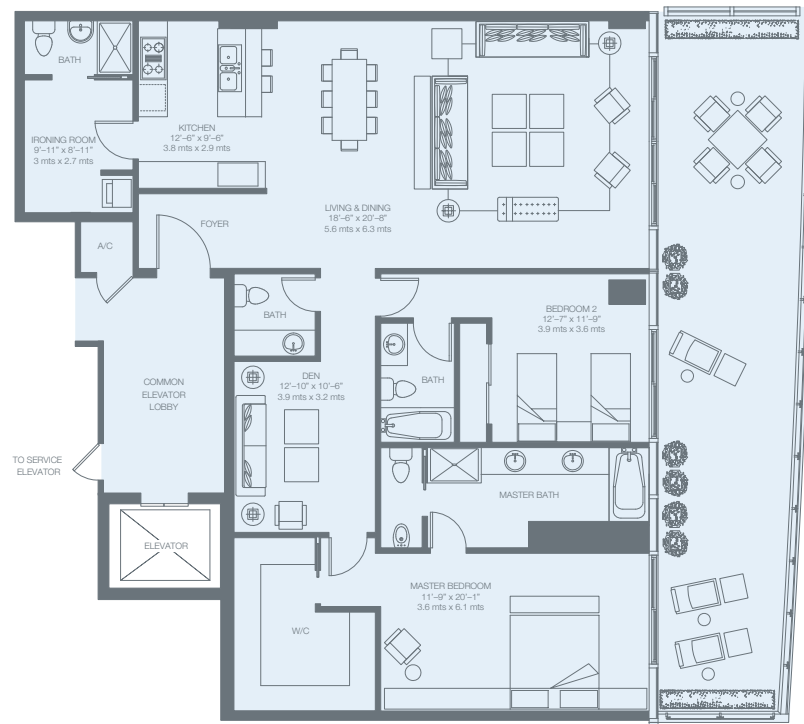
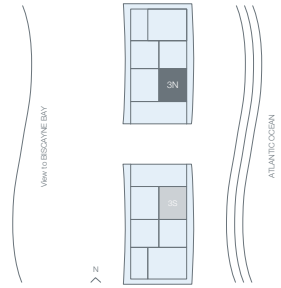
NORTH TOWER

2nd Floor

PRIVATE PARKING

RESIDENCE 1,992 sq. ft. 185 sq. mt.
TERRACE 557 sq. ft. 52 sq. mt.

Total 2,549 sq. ft. 237 sq. mt.



Stated dimensions are measured to the exterior boundaries of the exterior walls and the centerline of interior demising walls and in fact vary from the dimensions that would be determined by using the description and definition of the "Unit" set forth in the Declaration (which generally only includes the interior airspace between the perimeter walls and excludes interior structural components). For the square footage of the "Unit" calculated in the manner set forth in the Declaration, see Exhibit "3" to the Declaration. Additionally, measurements of rooms set forth on any floor plan are generally taken at the greatest points of each given room (as if the room were a perfect rectangle), without regard for any cutouts. Accordingly, the area of the actual room will typically be smaller than the product obtained by multiplying the stated length times width. All dimensions are approximate, and all floor plans and development plans are subject to change.

O4N

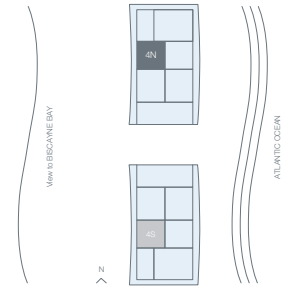
NORTH TOWER

2nd Floor

PRIVATE PARKING

RESIDENCE 1,591 sq. ft. 148 sq. mt.
TERRACE 403 sq. ft. 37 sq. mt.

Total 1,994 sq. ft. 185 sq. mt.



Stated dimensions are measured to the exterior boundaries of the exterior walls and the centerline of interior demising walls and in fact vary from the dimensions that would be determined by using the description and definition of the "Unit" set forth in the Declaration (which generally only includes the interior airspace between the perimeter walls and excludes interior structural components). For the square footage of the "Unit" calculated in the manner set forth in the Declaration, see Exhibit "3" to the Declaration. Additionally, measurements of rooms set forth on any floor plan are generally taken at the greatest points of each given room (as if the room were a perfect rectangle), without regard for any cutouts. Accordingly, the area of the actual room will typically be smaller than the product obtained by multiplying the stated length times width. All dimensions are approximate, and all floor plans and development plans are subject to change.

05N

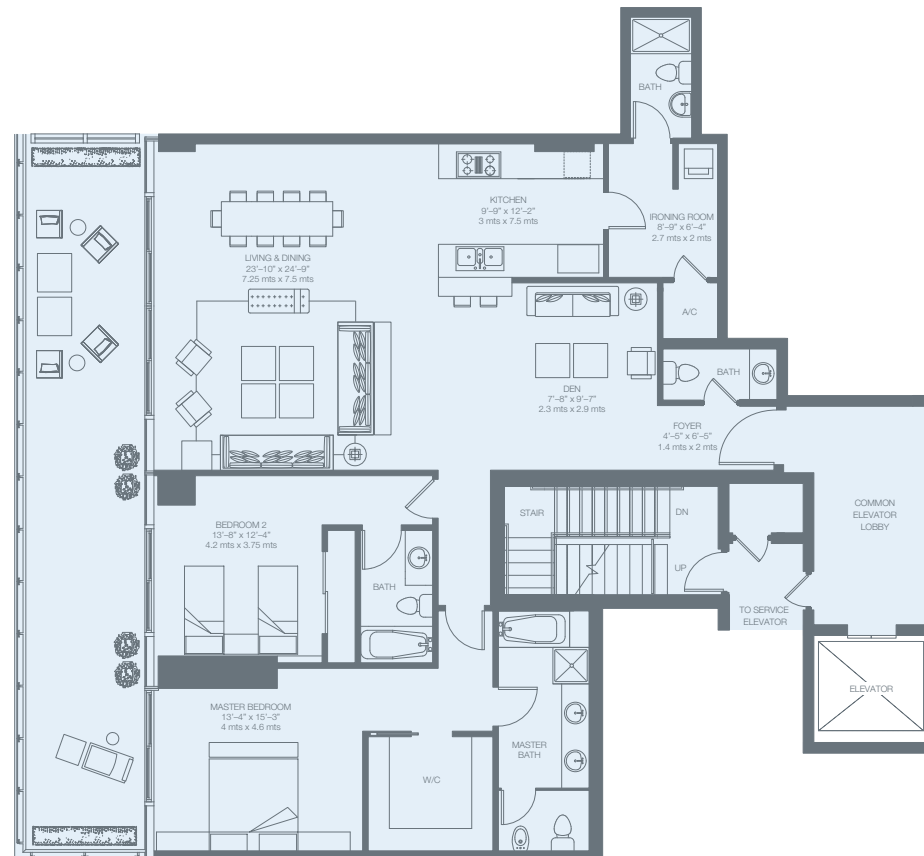
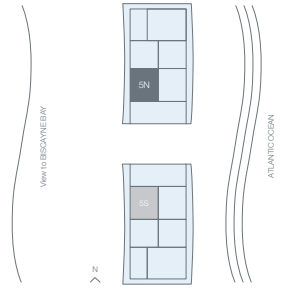
NORTH TOWER

2nd Floor

PRIVATE PARKING

RESIDENCE 1,982 sq. ft. 184 sq. mt.
TERRACE 491 sq. ft. 45 sq. mt.

Total 2,473 sq. ft. 229 sq. mt.



Stated dimensions are measured to the exterior boundaries of the exterior walls and the centerline of interior demising walls and in fact vary from the dimensions that would be determined by using the description and definition of the "Unit" set forth in the Declaration (which generally only includes the interior airspace between the perimeter walls and excludes interior structural components). For the square footage of the "Unit" calculated in the manner set forth in the Declaration, see Exhibit "3" to the Declaration. Additionally, measurements of rooms set forth on any floor plan are generally taken at the greatest points of each given room (as if the room were a perfect rectangle), without regard for any cutouts. Accordingly, the area of the actual room will typically be smaller than the product obtained by multiplying the stated length times width. All dimensions are approximate, and all floor plans and development plans are subject to change.

O4N

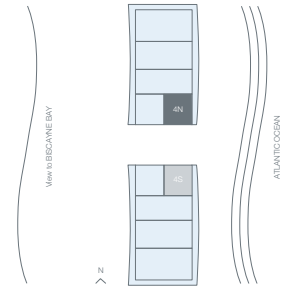
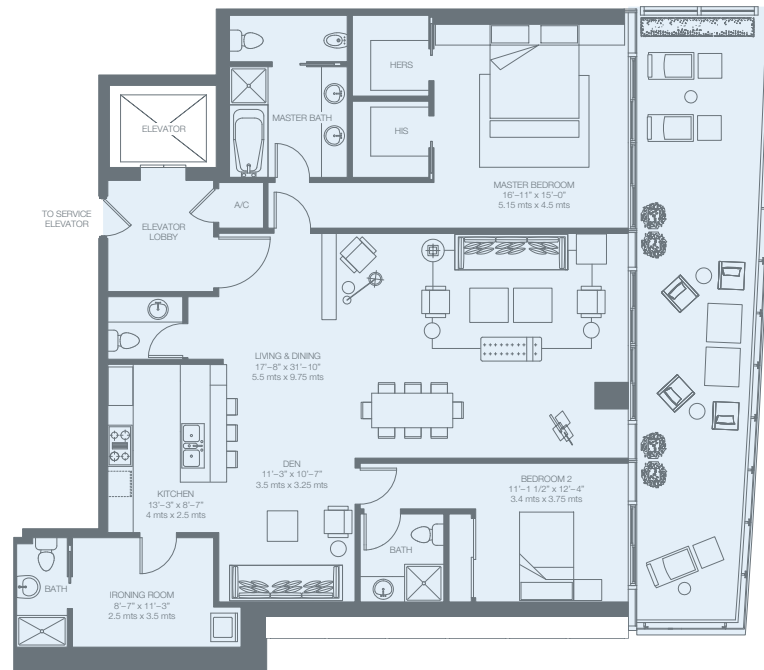
NORTH TOWER

3rd Floor

PRIVATE PARKING

RESIDENCE 2,064 sq. ft. 192 sq. mt.
TERRACE 405 sq. ft. 38 sq. mt.

Total 2,469 sq. ft. 230 sq. mt.

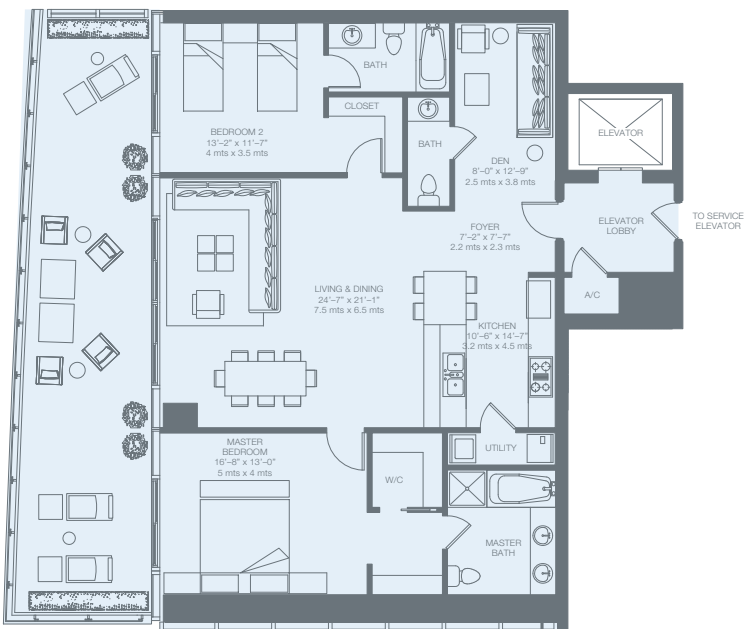
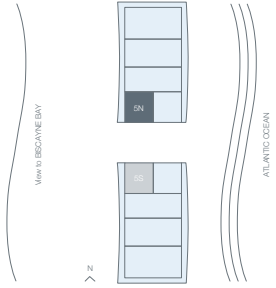


Stated dimensions are measured to the exterior boundaries of the exterior walls and the centerline of interior demising walls and in fact vary from the dimensions that would be determined by using the description and definition of the "Unit" set forth in the Declaration (which generally only includes the interior airspace between the perimeter walls and excludes interior structural components). For the square footage of the "Unit" calculated in the manner set forth in the Declaration, see Exhibit "3" to the Declaration. Additionally, measurements of rooms set forth on any floor plan are generally taken at the greatest points of each given room (as if the room were a perfect rectangle), without regard for any cutouts. Accordingly, the area of the actual room will typically be smaller than the product obtained by multiplying the stated length times width. All dimensions are approximate, and all floor plans and development plans are subject to change.

05N

NORTH TOWER

3rd Floor	RESIDENCE	1,756 sq. ft. 163 sq. mt.
	TERRACE	450 sq. ft. 42 sq. mt.
PRIVATE PARKING	Total	2,206 sq. ft. 205 sq. mt.



 Stated dimensions are measured to the exterior boundaries of the exterior walls and the centerline of interior demising walls and in fact vary from the dimensions that would be determined by using the description and definition of the "Unit" set forth in the Declaration (which generally only includes the interior airspace between the perimeter walls and excludes interior structural components). For the square footage of the "Unit" calculated in the manner set forth in the Declaration, see Exhibit "3" to the Declaration. Additionally, measurements of rooms set forth on any floor plan are generally taken at the greatest points of each given room (as if the room were a perfect rectangle), without regard for any cutouts. Accordingly, the area of the actual room will typically be smaller than the product obtained by multiplying the stated length times width. All dimensions are approximate, and all floor plans and development plans are subject to change.

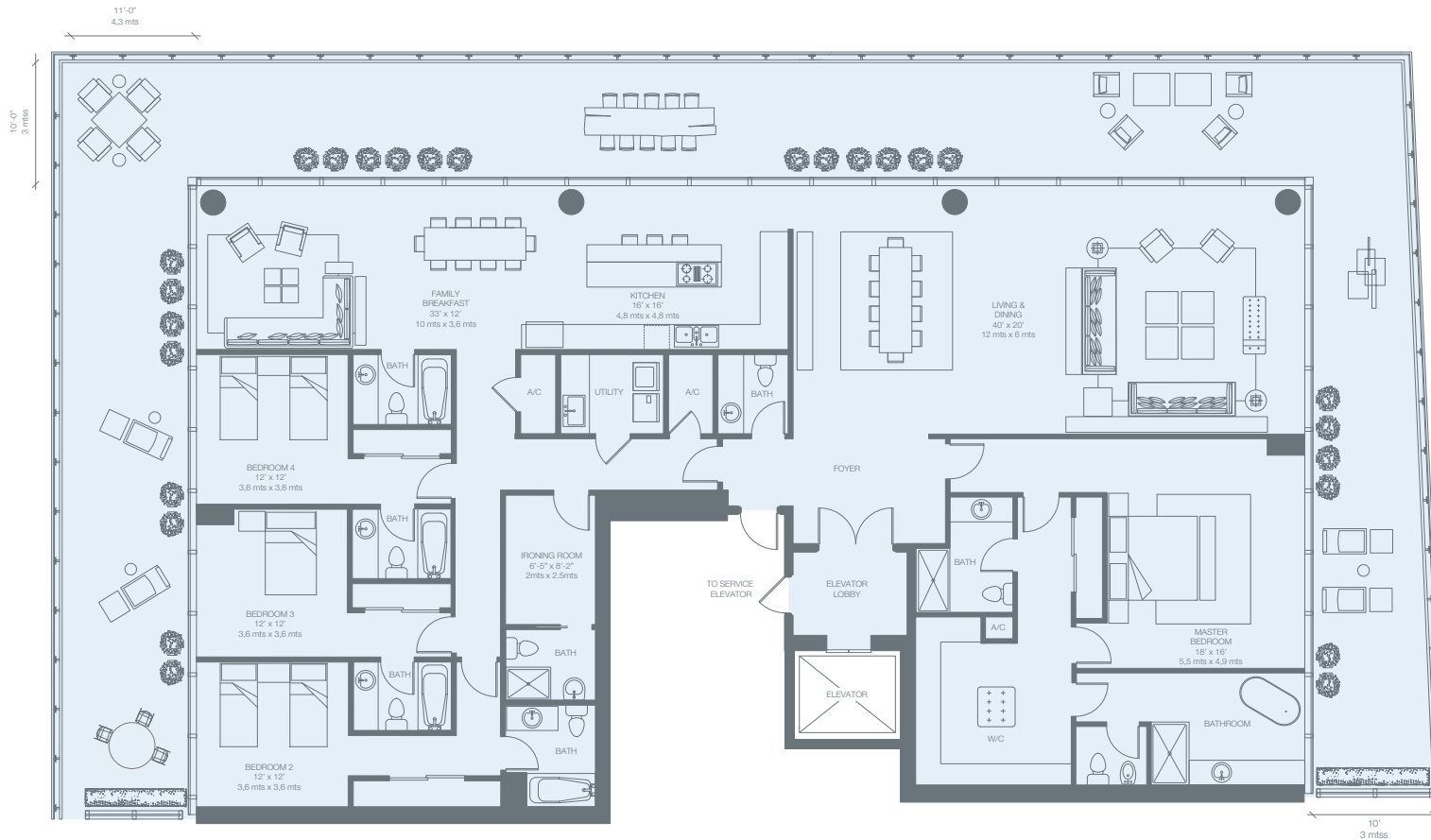
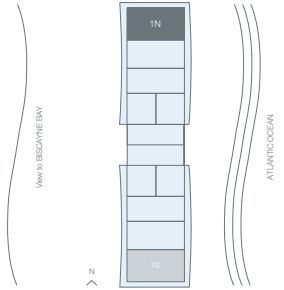
01N

NORTH TOWER

4th to 12th Floor

PRIVATE PARKING

RESIDENCE	4,080 sq. ft. 379 sq. mt.
TERRACE	2,070 sq. ft. 192 sq. mt.
Total	6,150 sq. ft. 571 sq. mt.



Stated dimensions are measured to the exterior boundaries of the exterior walls and the centerline of interior demising walls and in fact vary from the dimensions that would be determined by using the description and definition of the "Unit" set forth in the Declaration (which generally only includes the interior airspace between the perimeter walls and excludes interior structural components). For the square footage of the "Unit" calculated in the manner set forth in the Declaration, see Exhibit "3" to the Declaration. Additionally, measurements of rooms set forth on any floor plan are generally taken at the greatest points of each given room (as if the room were a perfect rectangle), without regard for any cutouts. Accordingly, the area of the actual room will typically be smaller than the product obtained by multiplying the stated length times width. All dimensions are approximate, and all floor plans and development plans are subject to change.

O2N

NORTH TOWER

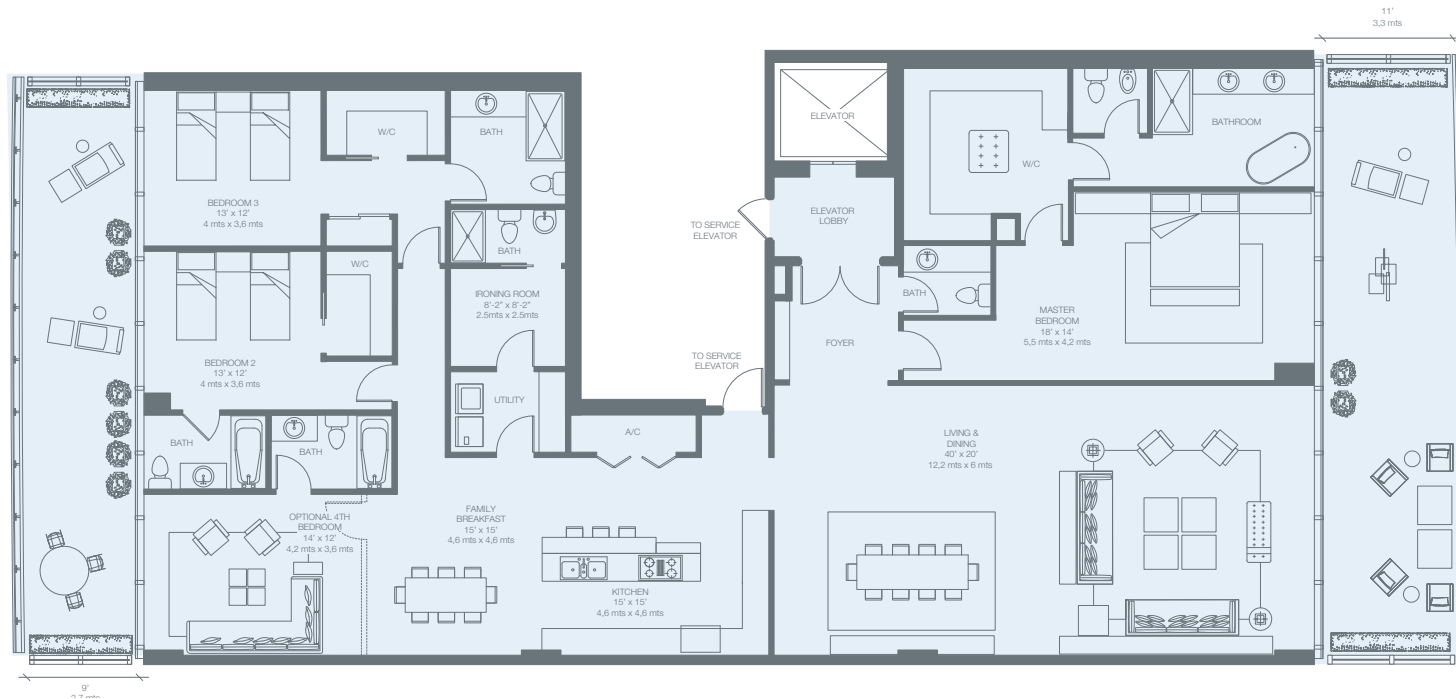
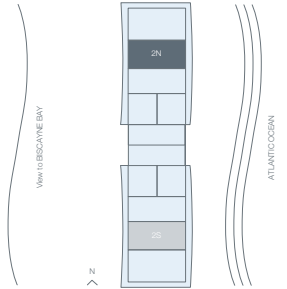
4th to 12th Floor

PRIVATE PARKING

RESIDENCE 3,603 sq. ft. 335 sq. mt.

TERRACE 892 sq. ft. 83 sq. mt.

Total 4,495 sq. ft. 418 sq. mt.



Stated dimensions are measured to the exterior boundaries of the exterior walls and the centerline of interior demising walls and in fact vary from the dimensions that would be determined by using the description and definition of the "Unit" set forth in the Declaration (which generally only includes the interior airspace between the perimeter walls and excludes interior structural components). For the square footage of the "Unit" calculated in the manner set forth in the Declaration, see Exhibit "3" to the Declaration. Additionally, measurements of rooms set forth on any floor plan are generally taken at the greatest points of each given room (as if the room were a perfect rectangle), without regard for any cutouts. Accordingly, the area of the actual room will typically be smaller than the product obtained by multiplying the stated length times width. All dimensions are approximate, and all floor plans and development plans are subject to change.

NORTH TOWER

PRIVATE PARKING

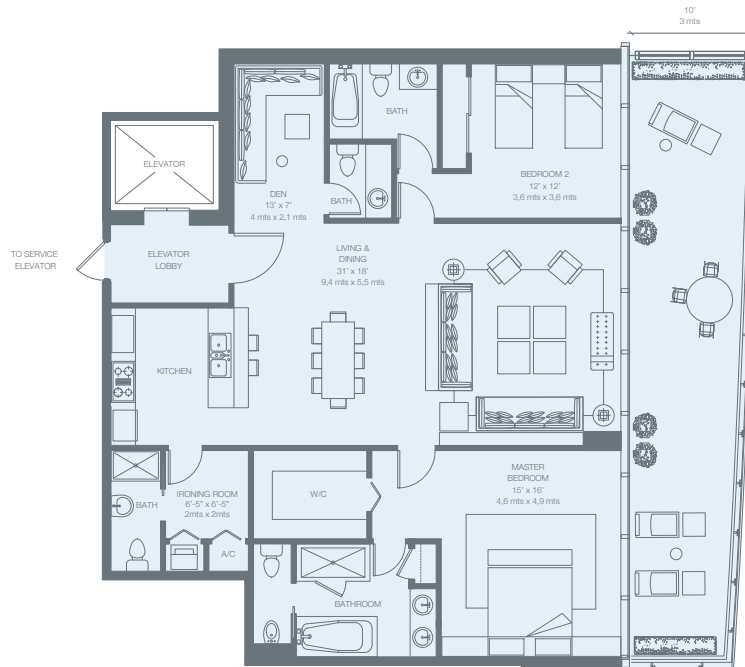
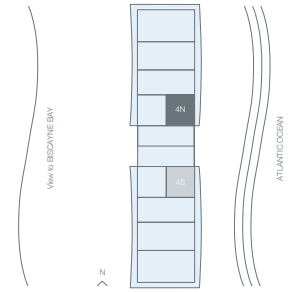
Total 4,013 *sq. ft.* 372 *sq. mt.*



04N
NORTH TOWER

4th to 12th Floor

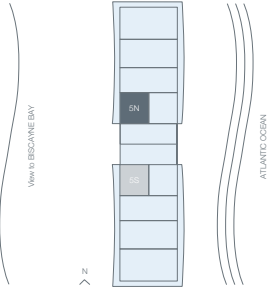
4th to 12th Floor	RESIDENCE	1,837 sq. ft.	171 sq. mt.
	TERRACE	452 sq. ft.	42 sq. mt.
PRIVATE PARKING	Total	2,289 sq. ft.	213 sq. mt.



05N

NORTH TOWER

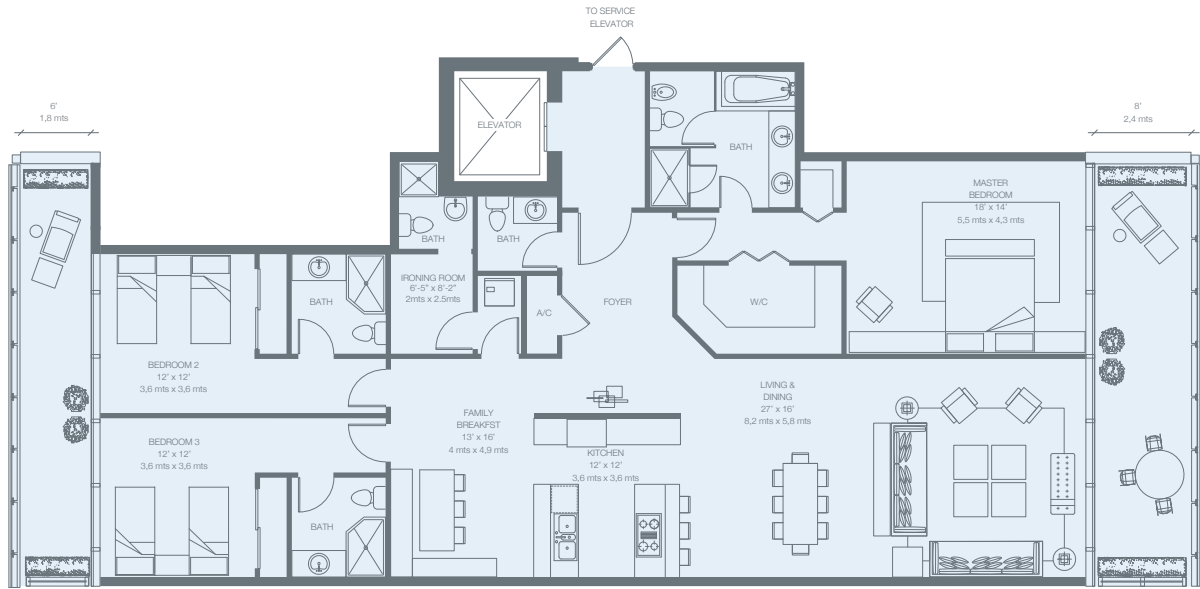
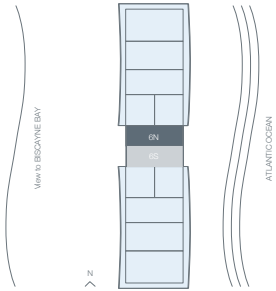
4th to 12th Floor	RESIDENCE	1,883 sq. ft. 175 sq. mt.
	TERRACE	498 sq. ft. 46 sq. mt.
PRIVATE PARKING	Total	2,381 sq. ft. 221 sq. mt.



Stated dimensions are measured to the exterior boundaries of the exterior walls and the centerline of interior demising walls and in fact vary from the dimensions that would be determined by using the description and definition of the "Unit" set forth in the Declaration (which generally only includes the interior airspace between the perimeter walls and excludes interior structural components). For the square footage of the "Unit" calculated in the manner set forth in the Declaration, see Exhibit "3" to the Declaration. Additionally, measurements of rooms set forth on any floor plan are generally taken at the greatest points of each given room (as if the room were a perfect rectangle), without regard for any cutouts. Accordingly, the area of the actual room will typically be smaller than the product obtained by multiplying the stated length times width. All dimensions are approximate, and all floor plans and development plans are subject to change.

06N
NORTH TOWER

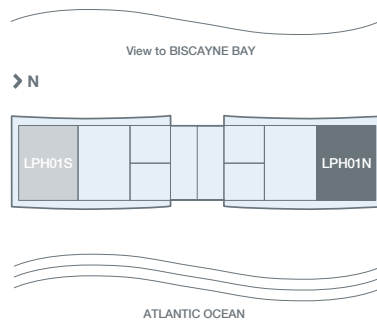
<i>4th to 12th Floor</i>	
RESIDENCE	2,406 sq. ft. 223 sq. mt.
TERRACE	443 sq. ft. 41 sq. mt.
PRIVATE PARKING	Total 2,849 sq. ft. 264 sq. mt.



Stated dimensions are measured to the exterior boundaries of the exterior walls and the centerline of interior demising walls and in fact vary from the dimensions that would be determined by using the description and definition of the "Unit" set forth in the Declaration (which generally only includes the interior airspace between the perimeter walls and excludes interior structural components). For the square footage of the "Unit" calculated in the manner set forth in the Declaration, see Exhibit "3" to the Declaration. Additionally, measurements of rooms set forth on any floor plan are generally taken at the greatest points of each given room (as if the room were a perfect rectangle), without regard for any cutouts. Accordingly, the area of the actual room will typically be smaller than the product obtained by multiplying the stated length times width. All dimensions are approximate, and all floor plans and development plans are subject to change.

14th Floor

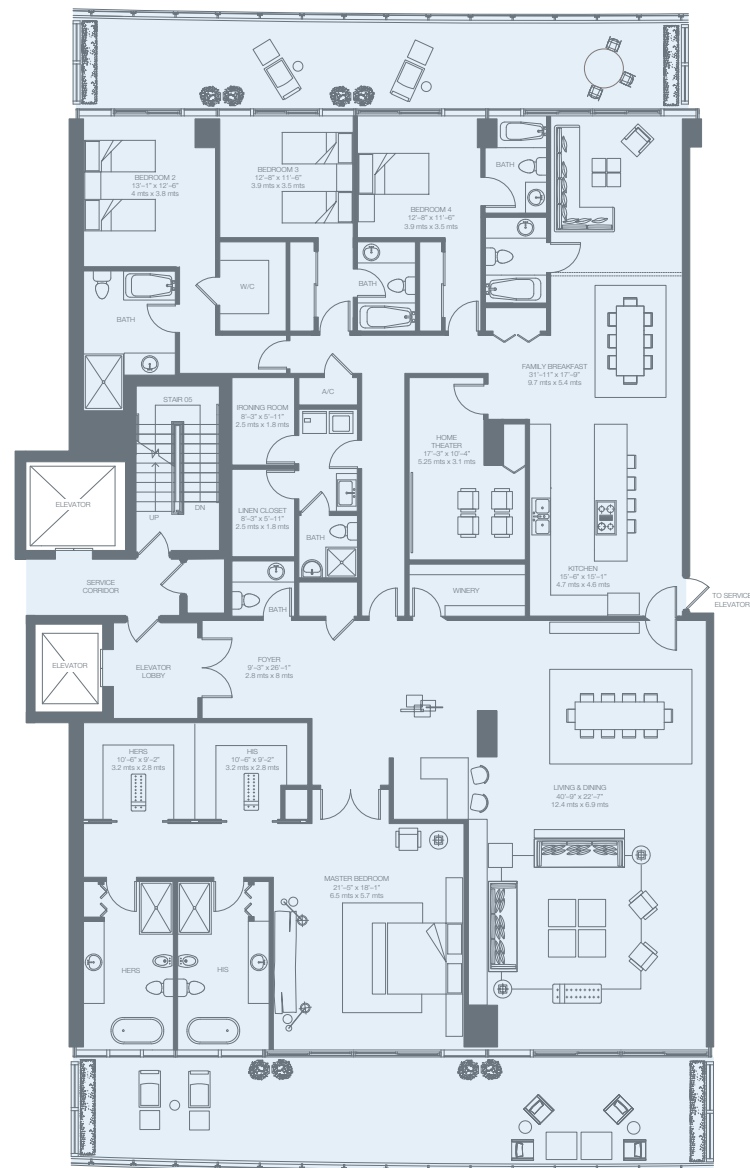
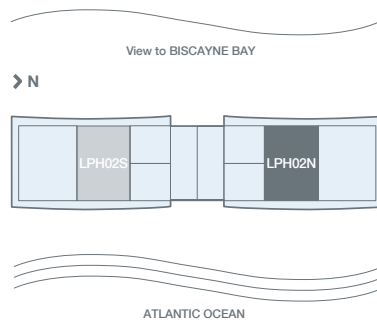
RESIDENCES	5,879	<i>sq. ft.</i>	546	<i>sq. mt.</i>
TERRACE	2,560	<i>sq. ft.</i>	238	<i>sq. mt.</i>
<hr/>				
Total	8,439	<i>sq. ft.</i>	784	<i>sq. mt.</i>



LPH02N

14th Floor

RESIDENCES	5,034 sq. ft. 468 sq. mt.
TERRACE	1,180 sq. ft. 110 sq. mt.
Total	6,214 sq. ft. 578 sq. mt.



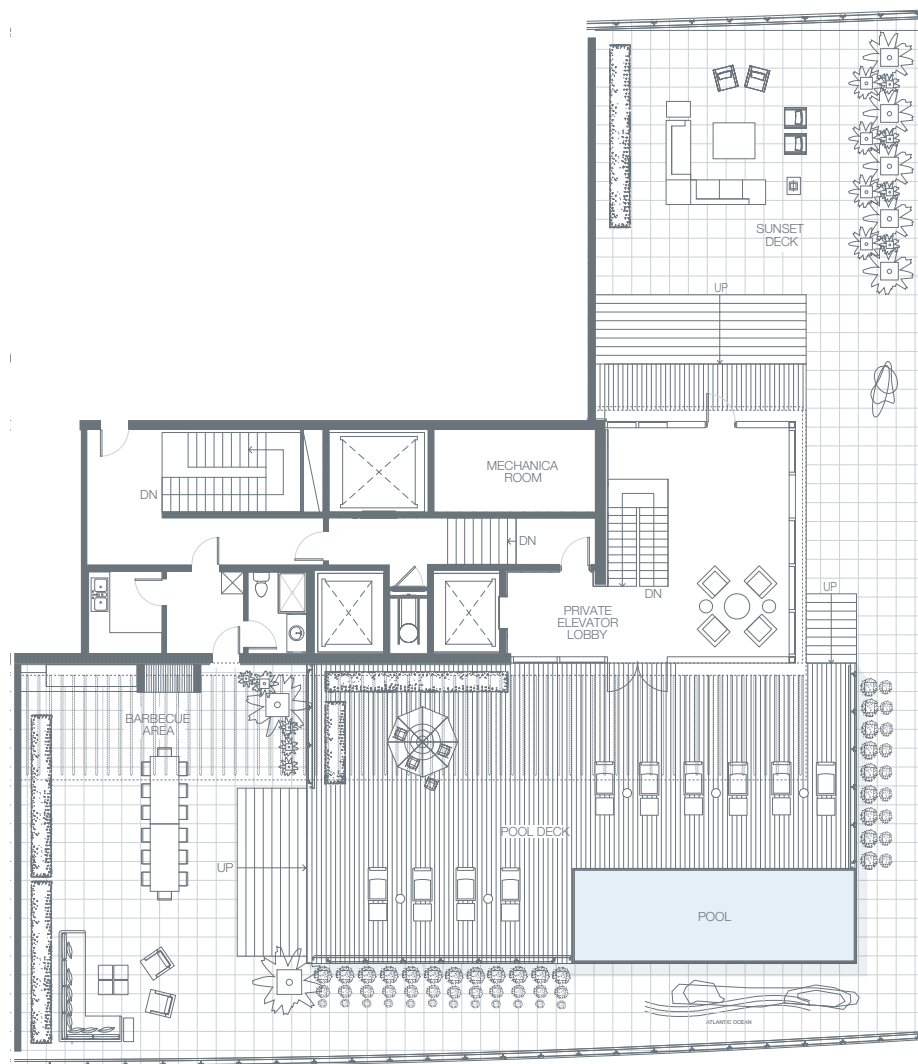
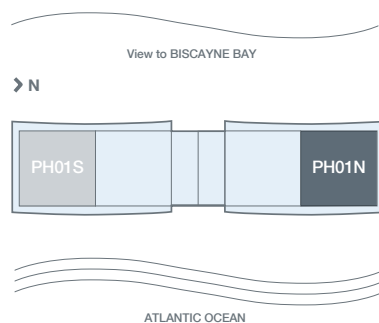
Stated dimensions are measured to the exterior boundaries of the exterior walls and the centerline of interior demising walls and in fact vary from the dimensions that would be determined by using the description and definition of the "Unit" set forth in the Declaration (which generally only includes the interior airspace between the perimeter walls and excludes interior structural components). For the square footage of the "Unit" calculated in the manner set forth in the Declaration, see Exhibit "3" to the Declaration. Additionally, measurements of rooms set forth on any floor plan are generally taken at the greatest points of each given room (as if the room were a perfect rectangle), without regard for any cutouts. Accordingly, the area of the actual room will typically be smaller than the product obtained by multiplying the stated length times width. All dimensions are approximate, and all floor plans and development plans are subject to change.

PH01N

16th Floor

RESIDENCES	Upper Floor	358 sq. ft. 33 sq. mt.
	Lower Floor	7,894 sq. ft. 733 sq. mt.
TERRACE	Upper Floor	6,764 sq. ft. 628 sq. mt.
	Lower Floor	2,962 sq. ft. 275 sq. mt.
Total		17,978 sq. ft. 1,669 sq. mt.

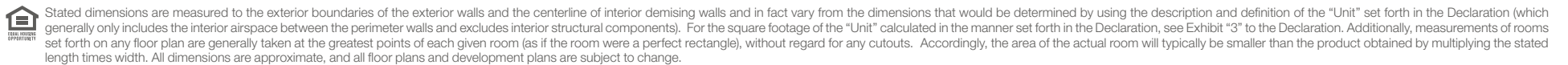
PRIVATE PARKING



PENTHOUSE TERRACE



Stated dimensions are measured to the exterior boundaries of the exterior walls and the centerline of interior demising walls and in fact vary from the dimensions that would be determined by using the description and definition of the "Unit" set forth in the Declaration (which generally only includes the interior airspace between the perimeter walls and excludes interior structural components). For the square footage of the "Unit" calculated in the manner set forth in the Declaration, see Exhibit "3" to the Declaration. Additionally, measurements of rooms set forth on any floor plan are generally taken at the greatest points of each given room (as if the room were a perfect rectangle), without regard for any cutouts. Accordingly, the area of the actual room will typically be smaller than the product obtained by multiplying the stated length times width. All dimensions are approximate, and all floor plans and development plans are subject to change.

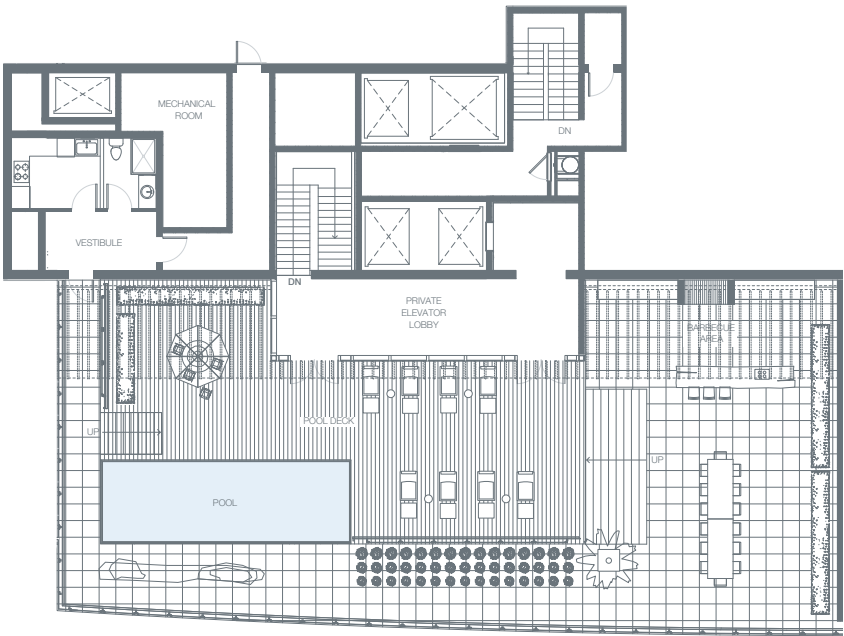
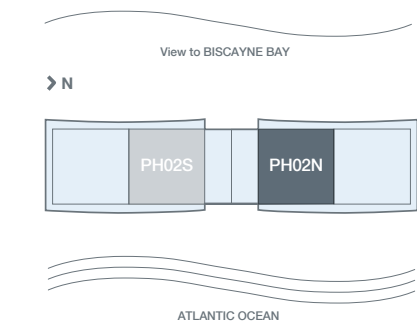


PH02N

16th Floor

RESIDENCES	Upper Floor	325 sq. ft. 30 sq. mt.
	Lower Floor	7,291 sq. ft. 677 sq. mt.
TERRACE	Upper Floor	3,815 sq. ft. 354 sq. mt.
	Lower Floor	1,728 sq. ft. 160 sq. mt.
Total		13,159 sq. ft. 1,221 sq. mt.

PRIVATE PARKING



PENTHOUSE TERRACE



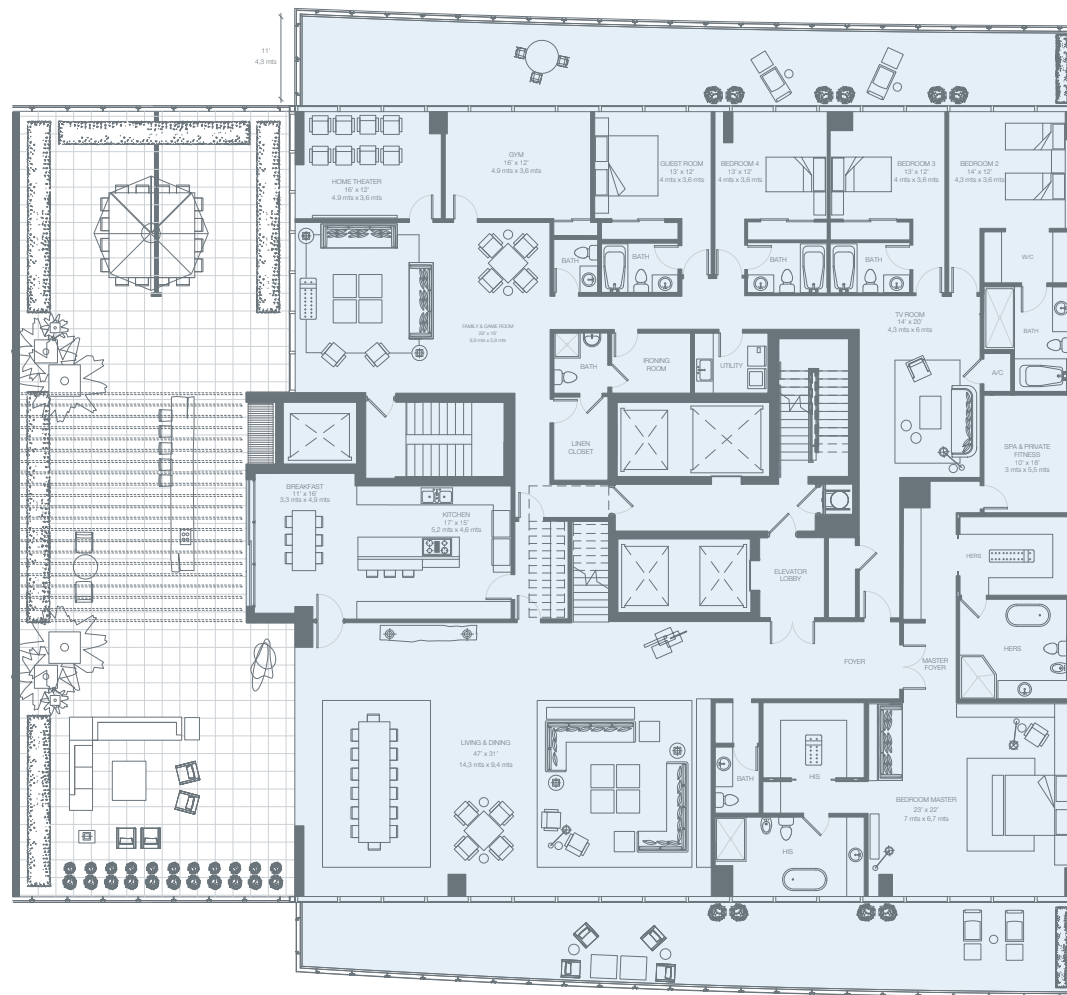
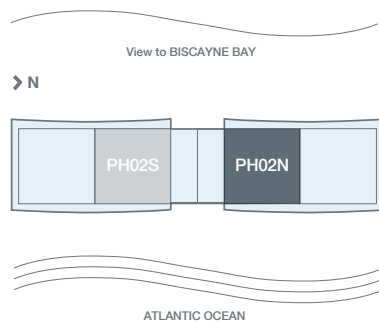
Stated dimensions are measured to the exterior boundaries of the exterior walls and the centerline of interior demising walls and in fact vary from the dimensions that would be determined by using the description and definition of the "Unit" set forth in the Declaration (which generally only includes the interior airspace between the perimeter walls and excludes interior structural components). For the square footage of the "Unit" calculated in the manner set forth in the Declaration, see Exhibit "3" to the Declaration. Additionally, measurements of rooms set forth on any floor plan are generally taken at the greatest points of each given room (as if the room were a perfect rectangle), without regard for any cutouts. Accordingly, the area of the actual room will typically be smaller than the product obtained by multiplying the stated length times width. All dimensions are approximate, and all floor plans and development plans are subject to change.

PH02N

15th Floor

RESIDENCES	Upper Floor	325 sq. ft. 30 sq. mt.
	Lower Floor	7,291 sq. ft. 677 sq. mt.
TERRACE	Upper Floor	3,815 sq. ft. 354 sq. mt.
	Lower Floor	1,728 sq. ft. 160 sq. mt.
Total		13,159 sq. ft. 1,221 sq. mt.

PRIVATE PARKING



PENTHOUSE



Stated dimensions are measured to the exterior boundaries of the exterior walls and the centerline of interior demising walls and in fact vary from the dimensions that would be determined by using the description and definition of the "Unit" set forth in the Declaration (which generally only includes the interior airspace between the perimeter walls and excludes interior structural components). For the square footage of the "Unit" calculated in the manner set forth in the Declaration, see Exhibit "3" to the Declaration. Additionally, measurements of rooms set forth on any floor plan are generally taken at the greatest points of each given room (as if the room were a perfect rectangle), without regard for any cutouts. Accordingly, the area of the actual room will typically be smaller than the product obtained by multiplying the stated length times width. All dimensions are approximate, and all floor plans and development plans are subject to change.