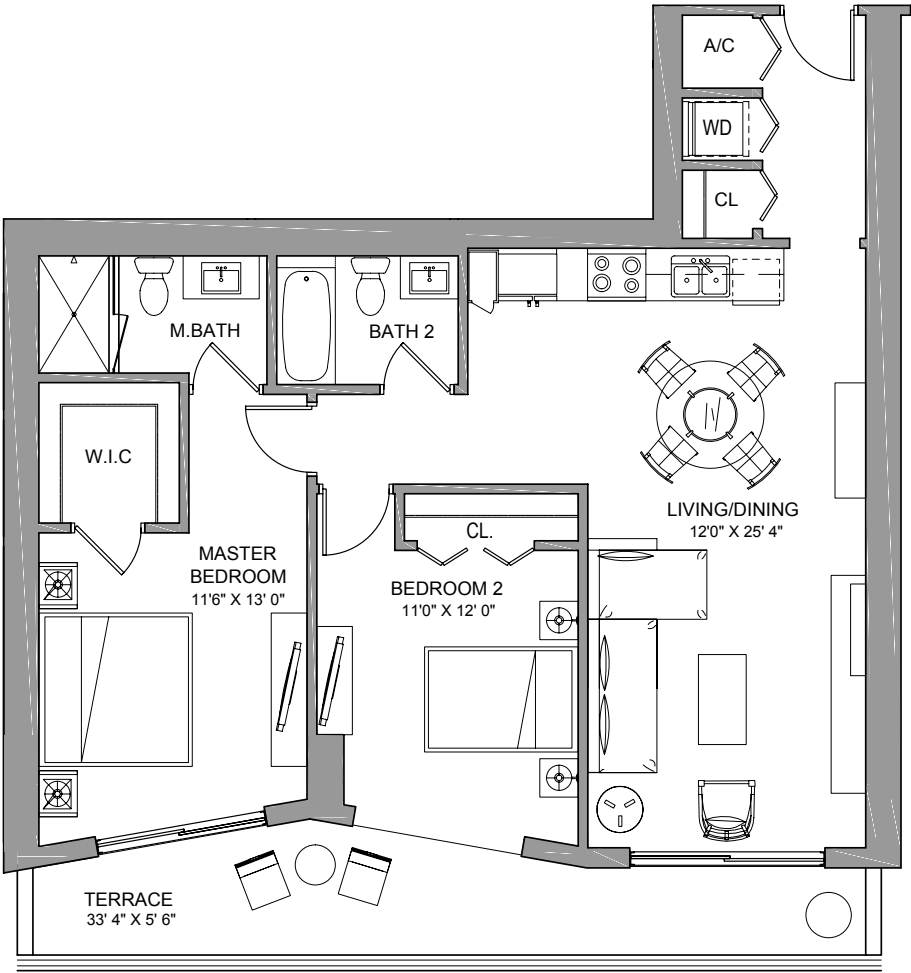
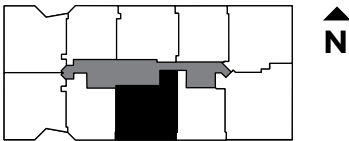



RESIDENCE ONE
2 BEDROOMS / 2 BATH

INTERIOR.....	1,064 sq ft	99 m ²
TERRACE.....	186 sq ft	17 m ²
<hr/>		
TOTAL	1,250 sq ft	116 m ²



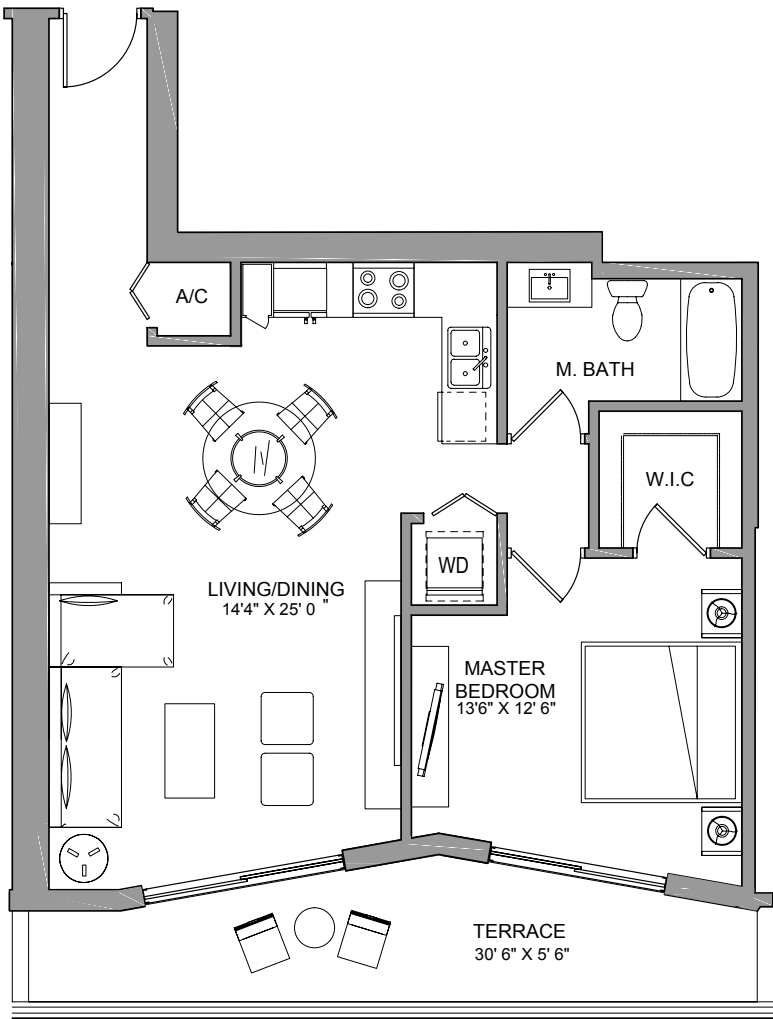
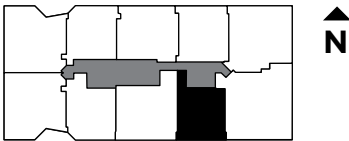
SALES AND MARKETING BY
ONEWORLD
PROPERTIES

 These drawings are conceptual only and are for the convenience of reference. They should not be relied upon as representations, express or implied, of the final detail of the residences. Units shown are examples of unit types and may not depict actual units. Stated square footages are ranges for a particular unit type and are measured to the exterior boundaries of the exterior walls and the centerline of interior demising walls and in fact vary from the area that would be determined by using the description and definition of the "Unit" set forth in the Declaration (which generally only includes the interior airspace between the perimeter walls and excludes interior structural components).

RESIDENCE TWO

1 BEDROOM / 1 BATH

INTERIOR.....	815 sq ft	76 m ²
TERRACE.....	165 sq ft	15 m ²
<hr/>		
TOTAL	980 sq ft	91 m ²



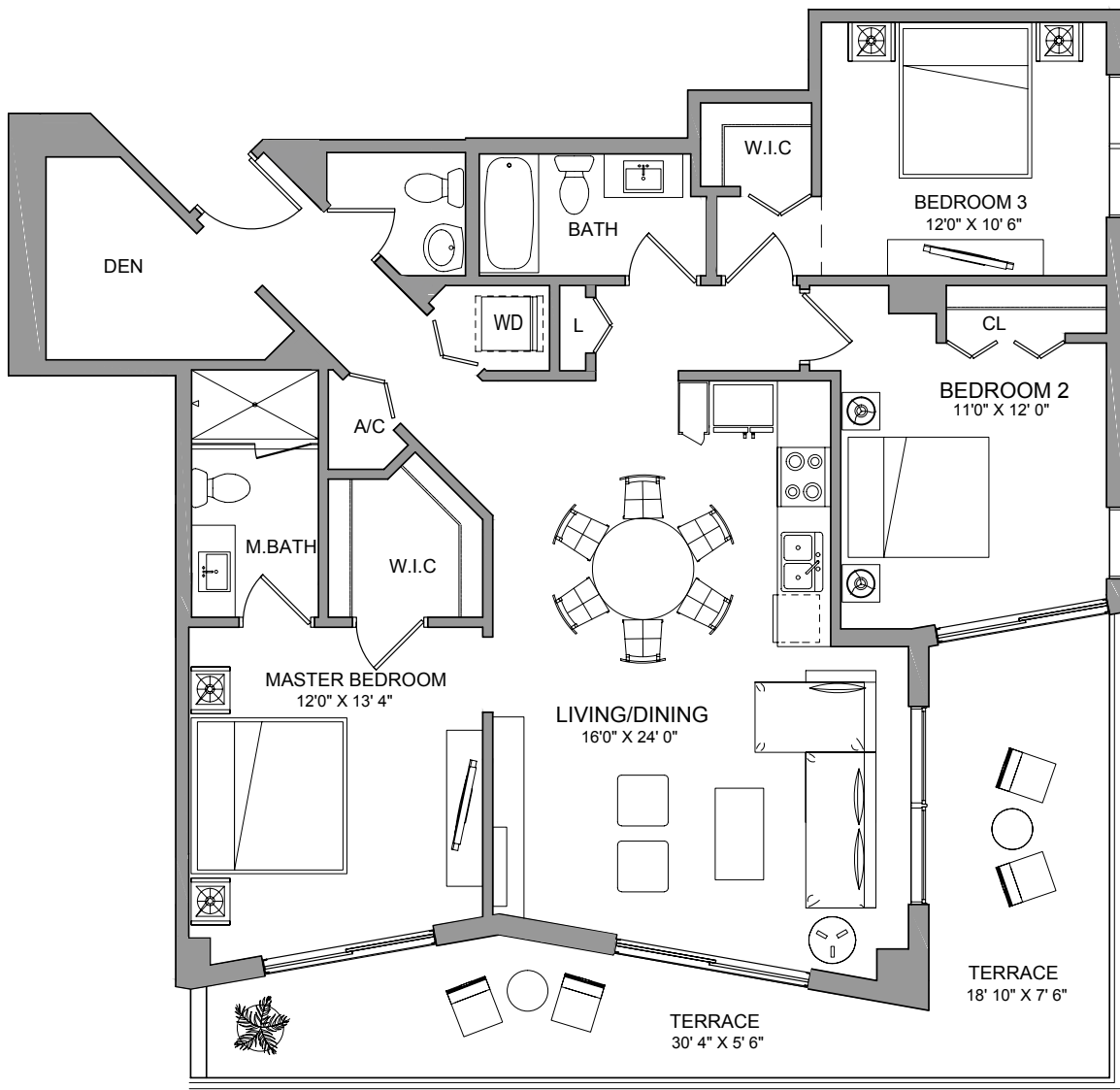
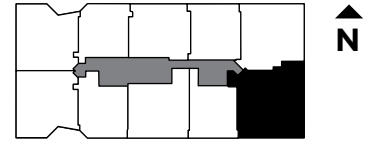
SALES AND MARKETING BY
ONEWORLD
PROPERTIES

RESIDENCE THREE

3 BEDROOMS + DEN / 2 1/2 BATH

INTERIOR..... 1,387 sq ft 129 m²
TERRACE..... 328 sq ft 31 m²

TOTAL **1,715 sq ft 160 m²**



SALES AND MARKETING BY
ONEWORLD
PROPERTIES

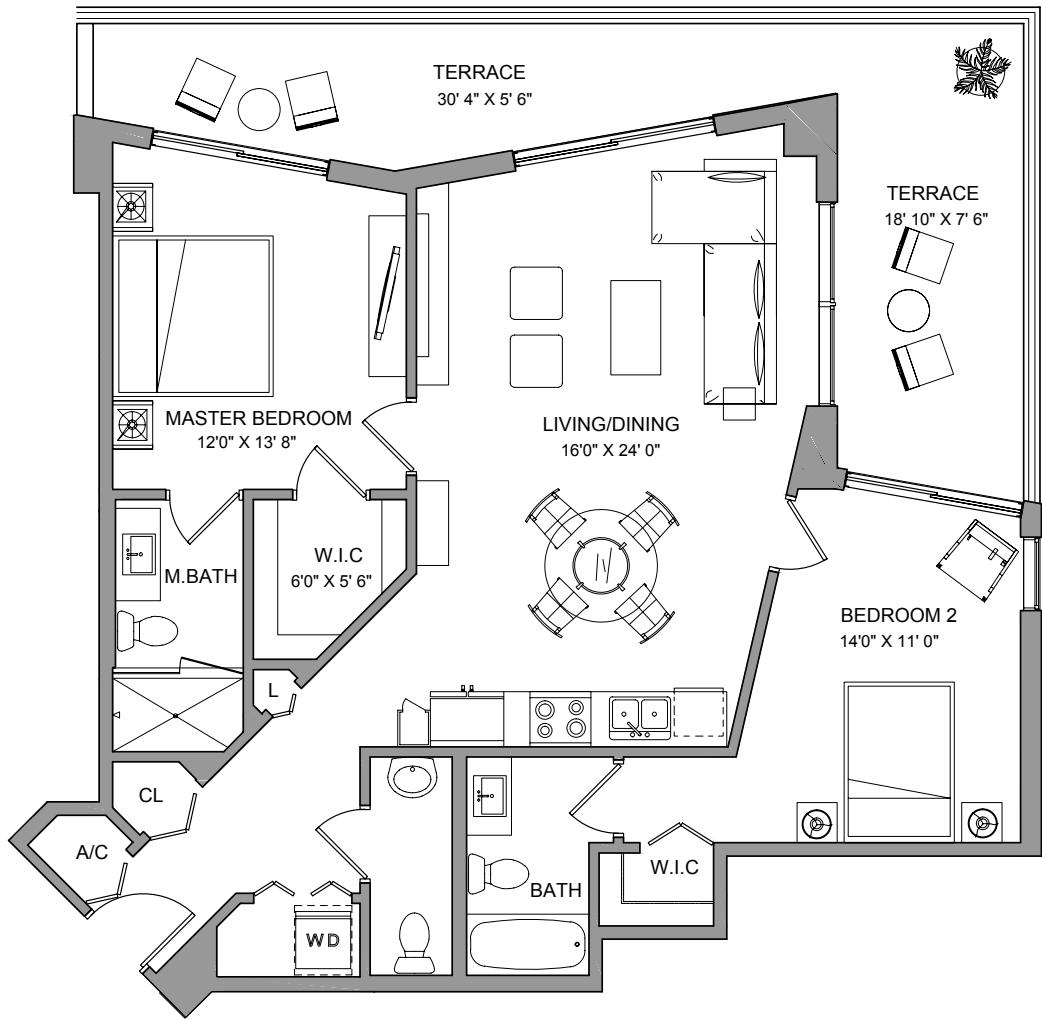
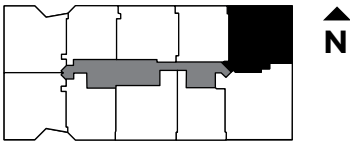


These drawings are conceptual only and are for the convenience of reference. They should not be relied upon as representations, express or implied, of the final detail of the residences. Units shown are examples of unit types and may not depict actual units. Stated square footages are ranges for a particular unit type and are measured to the exterior boundaries of the exterior walls and the centerline of interior demising walls and in fact vary from the area that would be determined by using the description and definition of the "Unit" set forth in the Declaration (which generally only includes the interior airspace between the perimeter walls and excludes interior structural components).

RESIDENCE FOUR

2 BEDROOMS / 2 1/2 BATH

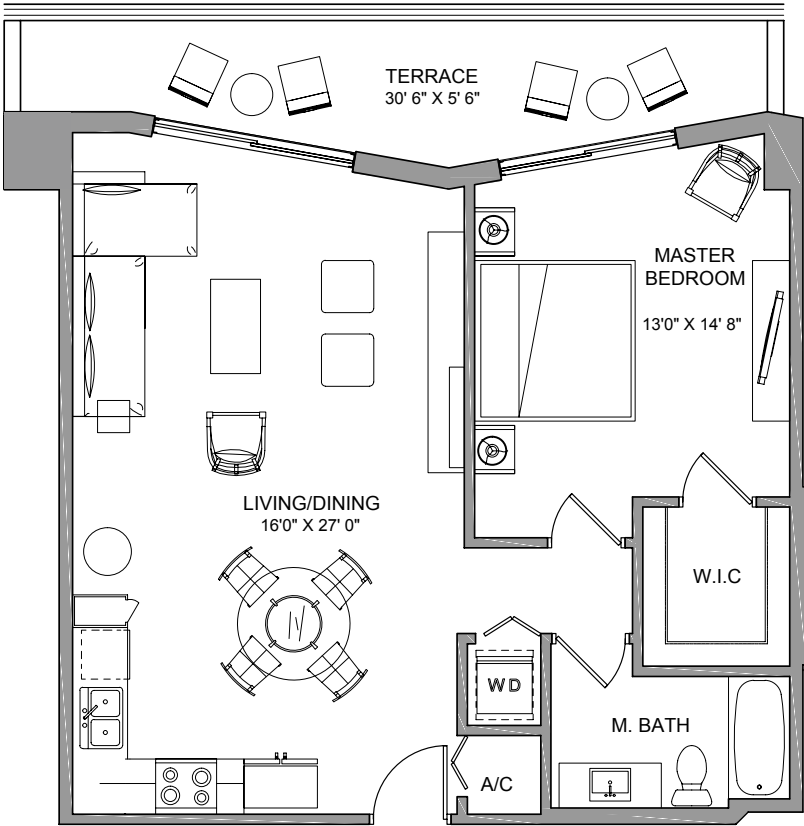
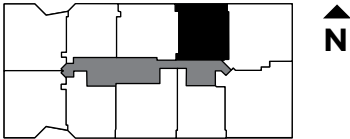
INTERIOR.....	1,124 sq ft	105 m ²
TERRACE.....	328 sq ft	31 m ²
<hr/>		
TOTAL	1,452 sq ft	136 m ²



SALES AND MARKETING BY
ONEWORLD
PROPERTIES

RESIDENCE FIVE
1 BEDROOM / 1 BATH

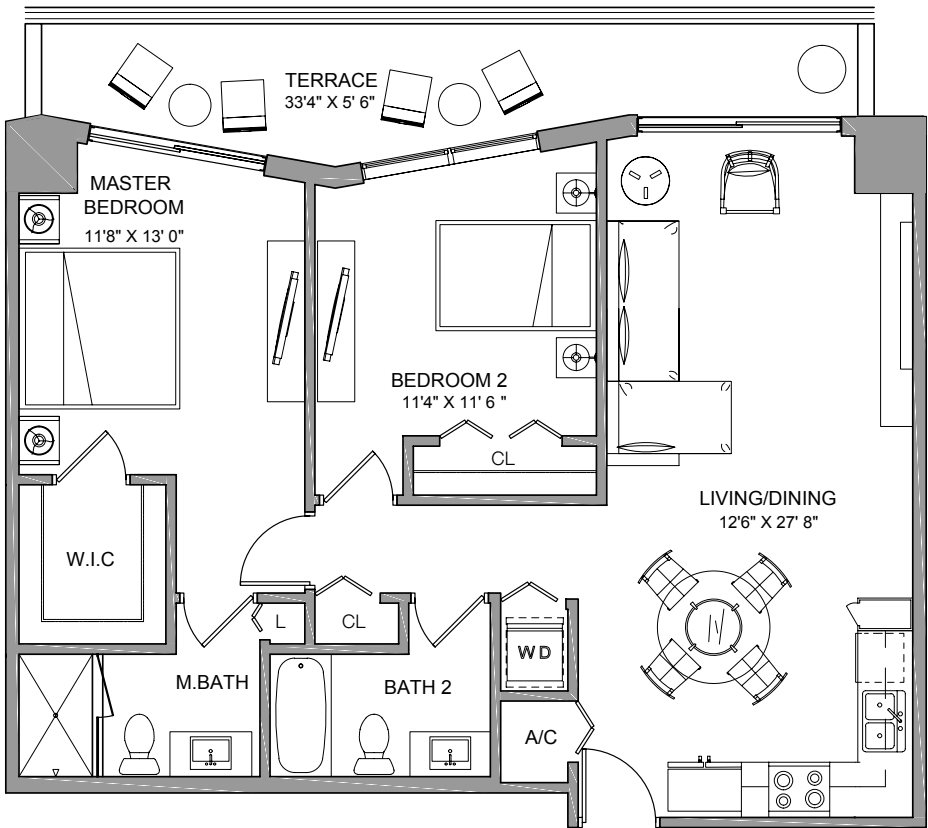
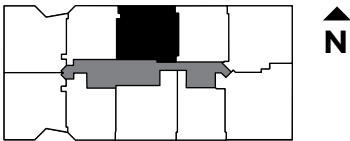
INTERIOR.....	827 sq ft	77 m ²
TERRACE.....	169 sq ft	16 m ²
<hr/>		
TOTAL	996 sq ft	93 m ²



SALES AND MARKETING BY
ONEWORLD
PROPERTIES

RESIDENCE SIX
2 BEDROOMS / 2 BATH

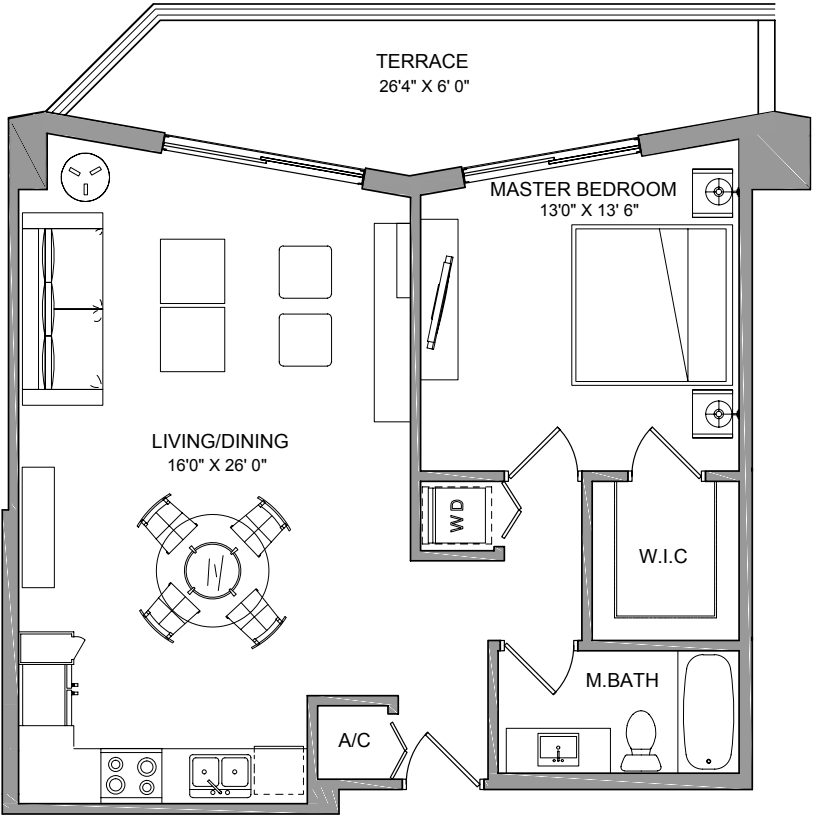
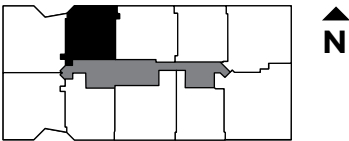
INTERIOR.....	1,009 sq ft	94 m ²
TERRACE.....	177 sq ft	16 m ²
<hr/>		
TOTAL	1,186 sq ft	110 m ²



SALES AND MARKETING BY
ONEWORLD
PROPERTIES

RESIDENCE SEVEN
1 BEDROOM / 1 BATH

INTERIOR.....	792 sq ft	74 m ²
TERRACE.....	167 sq ft	16 m ²
<hr/>		
TOTAL	959 sq ft	90 m ²



SALES AND MARKETING BY
ONEWORLD
PROPERTIES

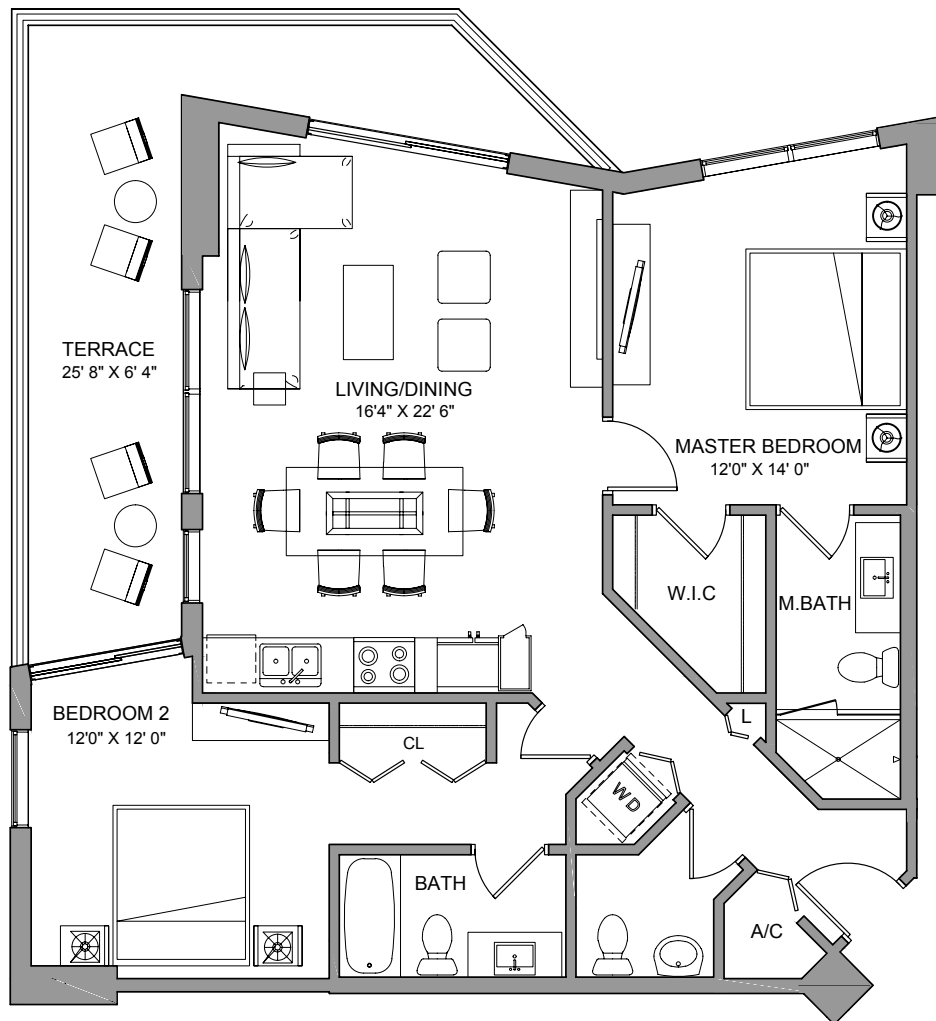
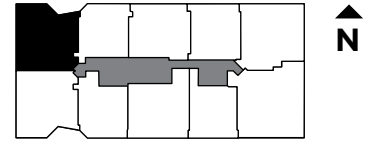
BRICKELLTEN

RESIDENCE EIGHT

2 BEDROOMS / 2 1/2 BATH

INTERIOR..... 1,111 sq ft 103 m²
TERRACE..... 254 sq ft 24 m²

TOTAL **1,365 sq ft 127 m²**



SALES AND MARKETING BY
ONEWORLD
PROPERTIES

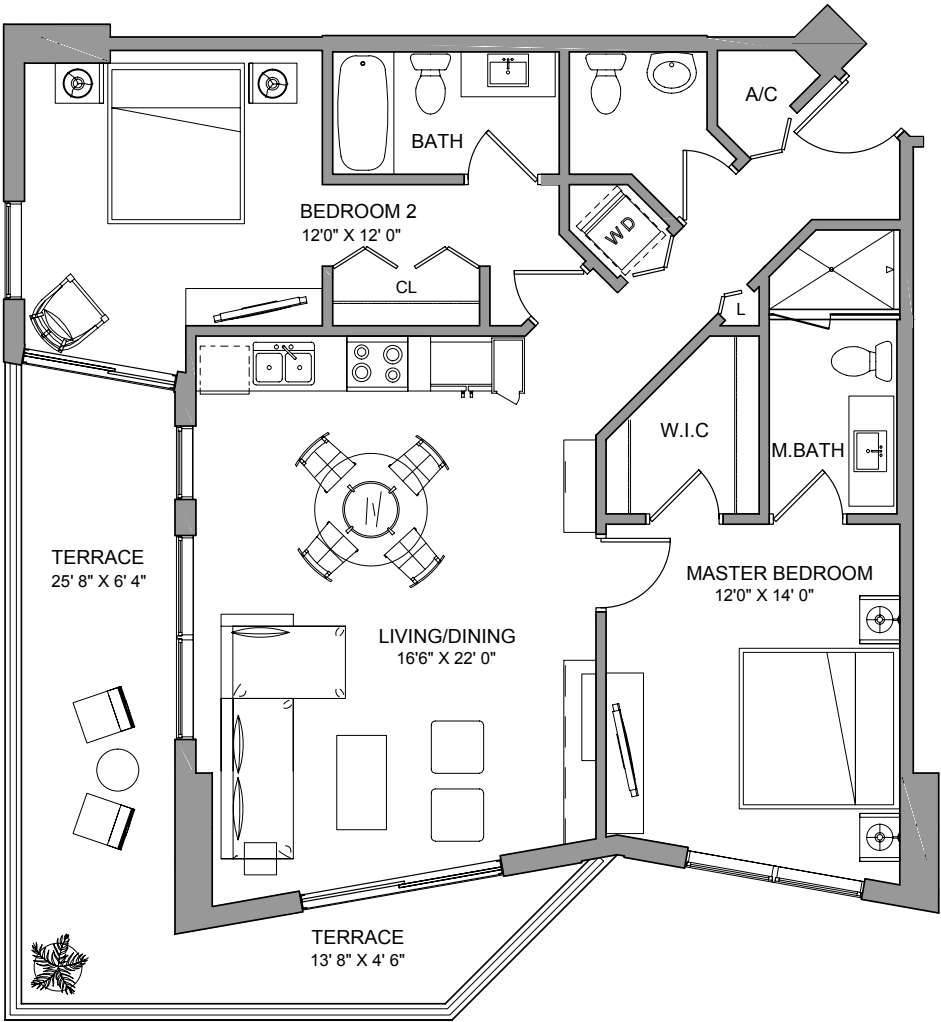
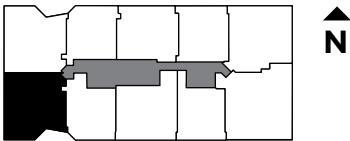


These drawings are conceptual only and are for the convenience of reference. They should not be relied upon as representations, express or implied, of the final detail of the residences. Units shown are examples of unit types and may not depict actual units. Stated square footages are ranges for a particular unit type and are measured to the exterior boundaries of the exterior walls and the centerline of interior demising walls and in fact vary from the area that would be determined by using the description and definition of the "Unit" set forth in the Declaration (which generally only includes the interior airspace between the perimeter walls and excludes interior structural components).

RESIDENCE NINE

2 BEDROOMS / 2 1/2 BATH

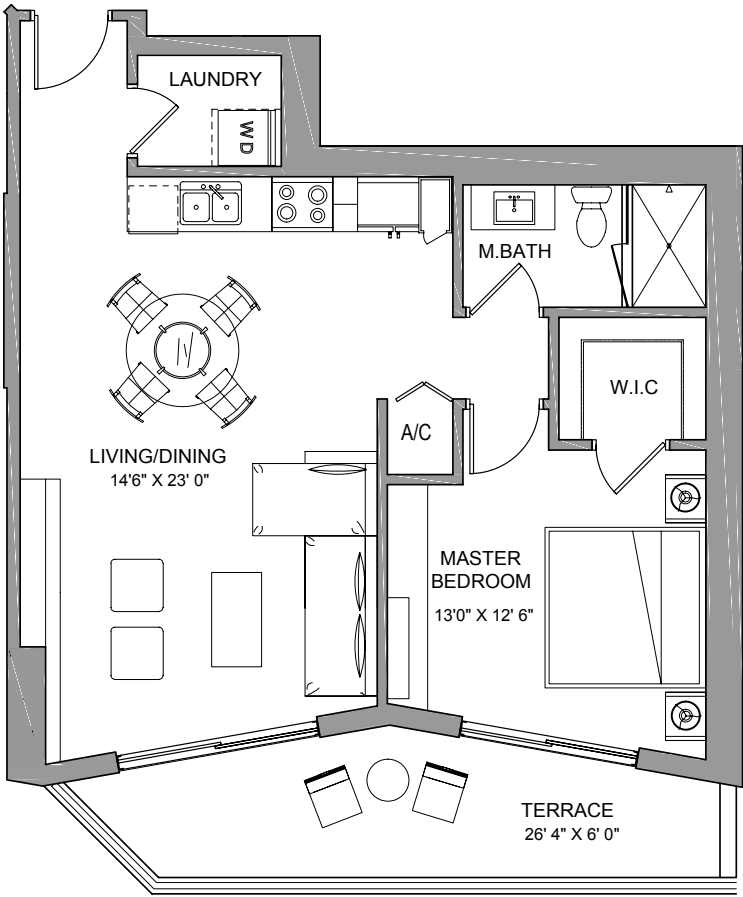
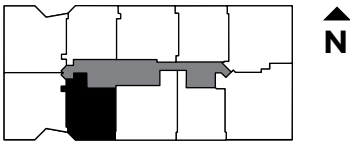
INTERIOR.....	1,116 sq ft	104 m ²
TERRACE.....	254 sq ft	24 m ²
<hr/>		
TOTAL	1,370 sq ft	128 m ²




SALES AND MARKETING BY
ONEWORLD
PROPERTIES

RESIDENCE TEN
1 BEDROOM / 1 BATH

INTERIOR.....	768 sq ft	71 m ²
TERRACE.....	150 sq ft	14 m ²
<hr/>		
TOTAL	918 sq ft	85 m ²



SALES AND MARKETING BY
ONEWORLD
PROPERTIES

 These drawings are conceptual only and are for the convenience of reference. They should not be relied upon as representations, express or implied, of the final detail of the residences. Units shown are examples of unit types and may not depict actual units. Stated square footages are ranges for a particular unit type and are measured to the exterior boundaries of the exterior walls and the centerline of interior demising walls and in fact vary from the area that would be determined by using the description and definition of the "Unit" set forth in the Declaration (which generally only includes the interior airspace between the perimeter walls and excludes interior structural components).

BRICKELLTEN

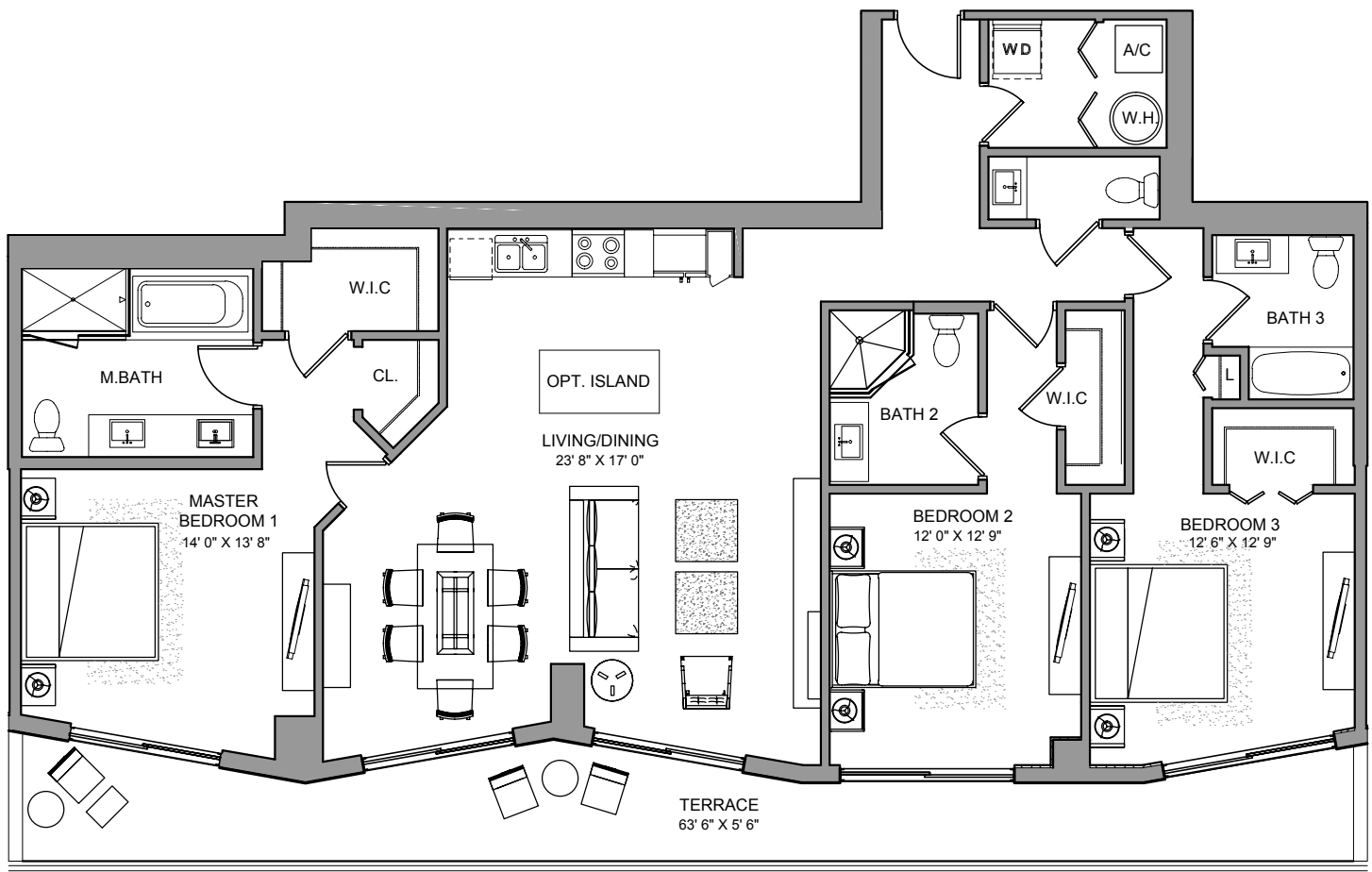
PH & LP ONE

3 BEDROOMS / 3 1/2 BATH

INTERIOR..... 1,812 sq ft 168 m²

TERRACE..... 337 sq ft 31 m²

TOTAL **2,149** sq ft **199** m²



SALES AND MARKETING BY
ONEWORLD
PROPERTIES



These drawings are conceptual only and are for the convenience of reference. They should not be relied upon as representations, express or implied, of the final detail of the residences. Units shown are examples of unit types and may not depict actual units. Stated square footages are ranges for a particular unit type and are measured to the exterior boundaries of the exterior walls and the centerline of interior demising walls and in fact vary from the area that would be determined by using the description and definition of the "Unit" set forth in the Declaration (which generally only includes the interior airspace between the perimeter walls and excludes interior structural components).

BRICKELLTEN

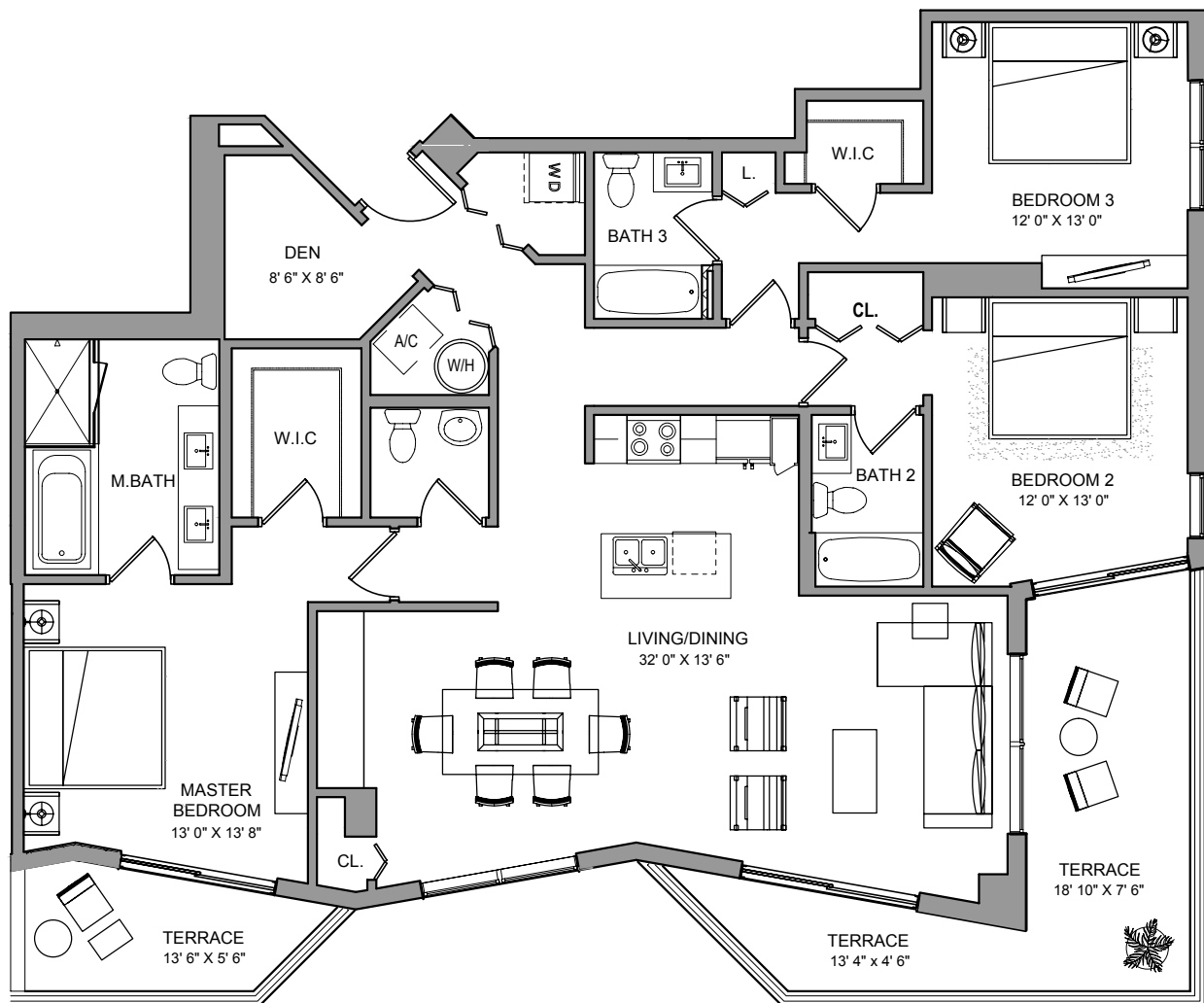
PH & LP TWO

3 BEDROOMS + DEN / 3 1/2 BATH

INTERIOR.....1,783 sq ft 166 m²

TERRACE..... 314 sq ft 29 m²

TOTAL **2,097 sq ft 195 m²**



SALES AND MARKETING BY
ONEWORLD
PROPERTIES



These drawings are conceptual only and are for the convenience of reference. They should not be relied upon as representations, express or implied, of the final detail of the residences. Units shown are examples of unit types and may not depict actual units. Stated square footages are ranges for a particular unit type and are measured to the exterior boundaries of the exterior walls and the centerline of interior demising walls and in fact vary from the area that would be determined by using the description and definition of the "Unit" set forth in the Declaration (which generally only includes the interior airspace between the perimeter walls and excludes interior structural components).

BRICKELLTEN

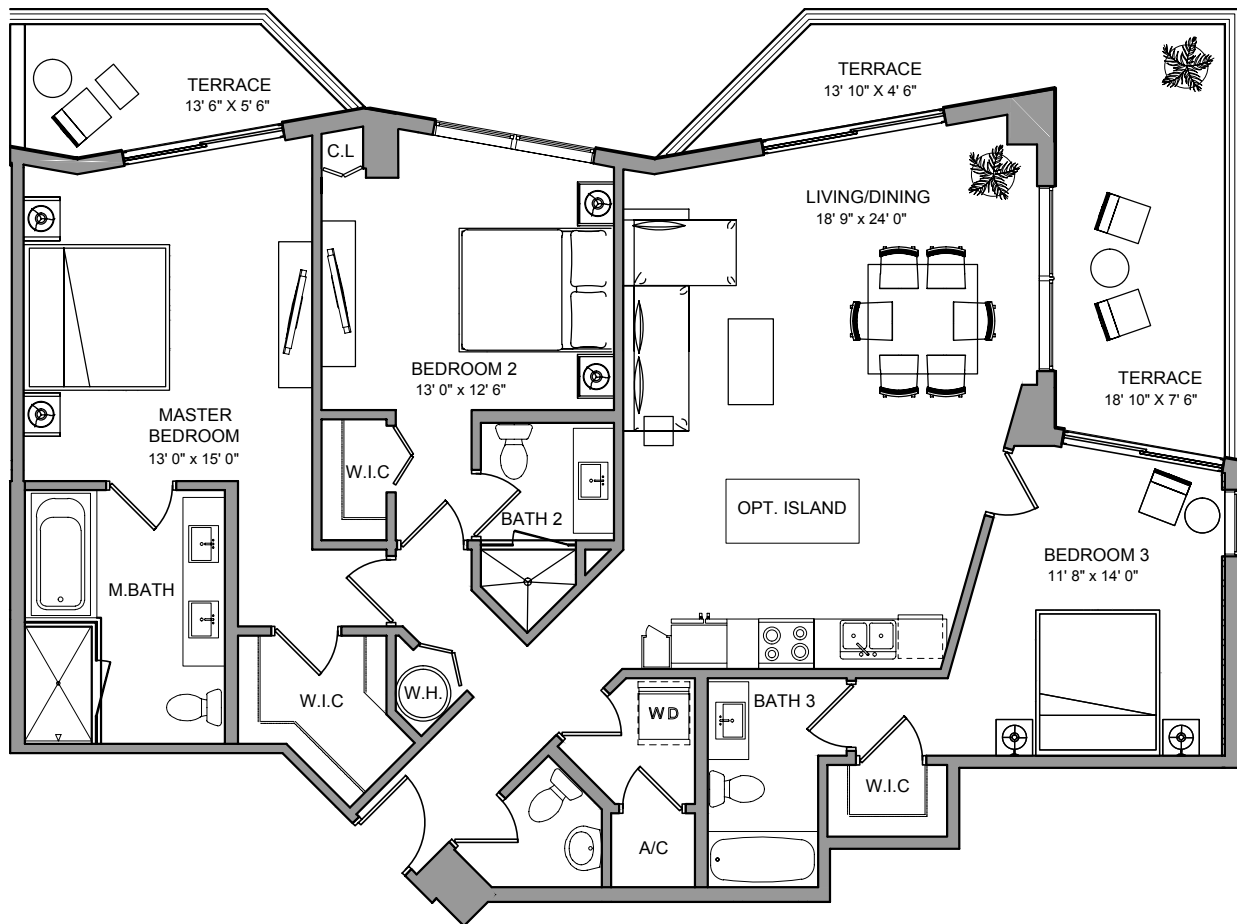
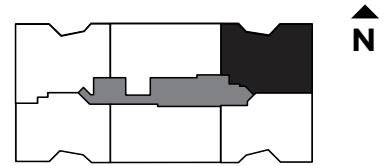
PH & LP THREE

3 BEDROOMS / 3 1/2 BATH

INTERIOR.....1,582 sq ft 147 m²

TERRACE..... 313 sq ft 29 m²

TOTAL **1,895 sq ft 176 m²**



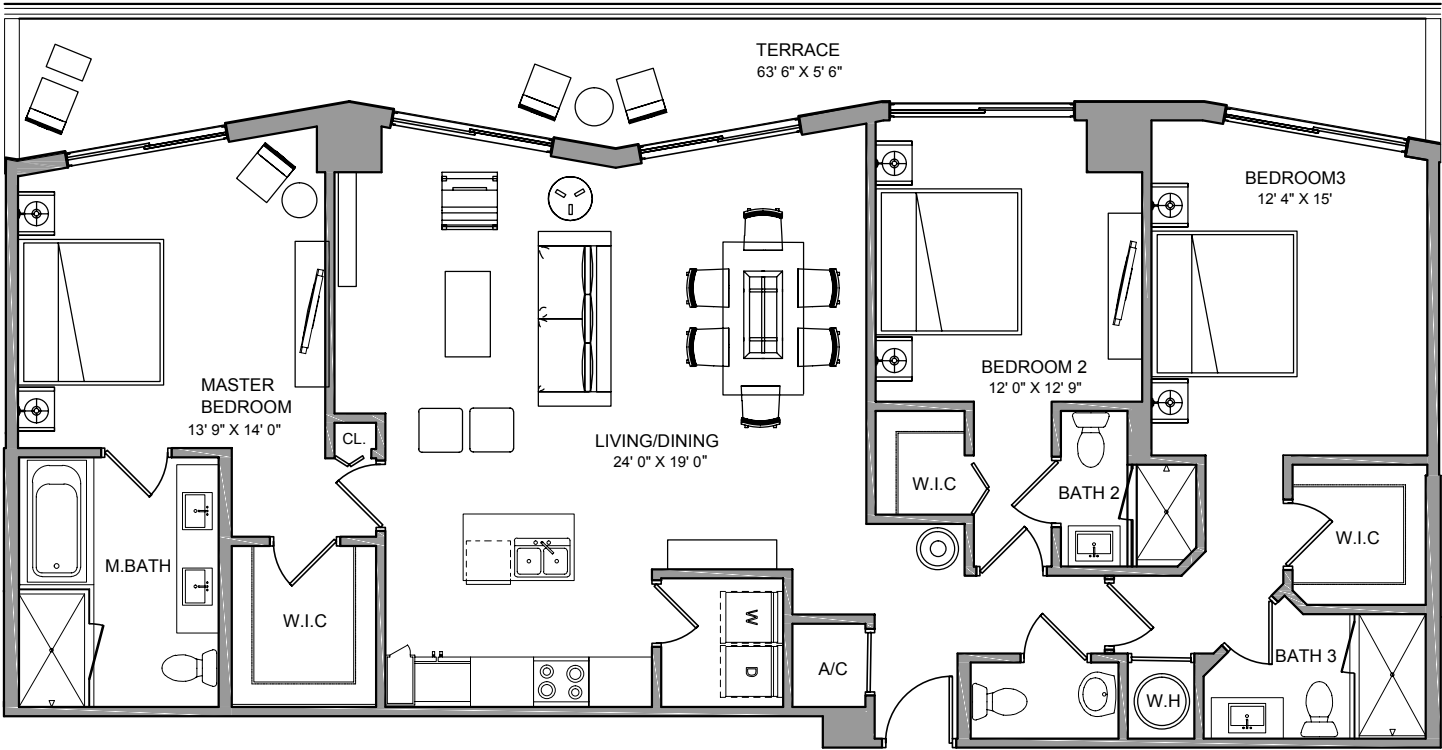
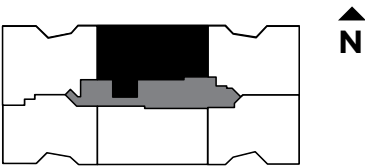
SALES AND MARKETING BY
ONEWORLD
PROPERTIES



These drawings are conceptual only and are for the convenience of reference. They should not be relied upon as representations, express or implied, of the final detail of the residences. Units shown are examples of unit types and may not depict actual units. Stated square footages are ranges for a particular unit type and are measured to the exterior boundaries of the exterior walls and the centerline of interior demising walls and in fact vary from the area that would be determined by using the description and definition of the "Unit" set forth in the Declaration (which generally only includes the interior airspace between the perimeter walls and excludes interior structural components).

PH & LP FOUR
3 BEDROOMS / 3 1/2 BATH

INTERIOR.....	1,736 sq ft	161 m ²
TERRACE.....	340 sq ft	32 m ²
<hr/>		
TOTAL	2,076 sq ft	193 m ²

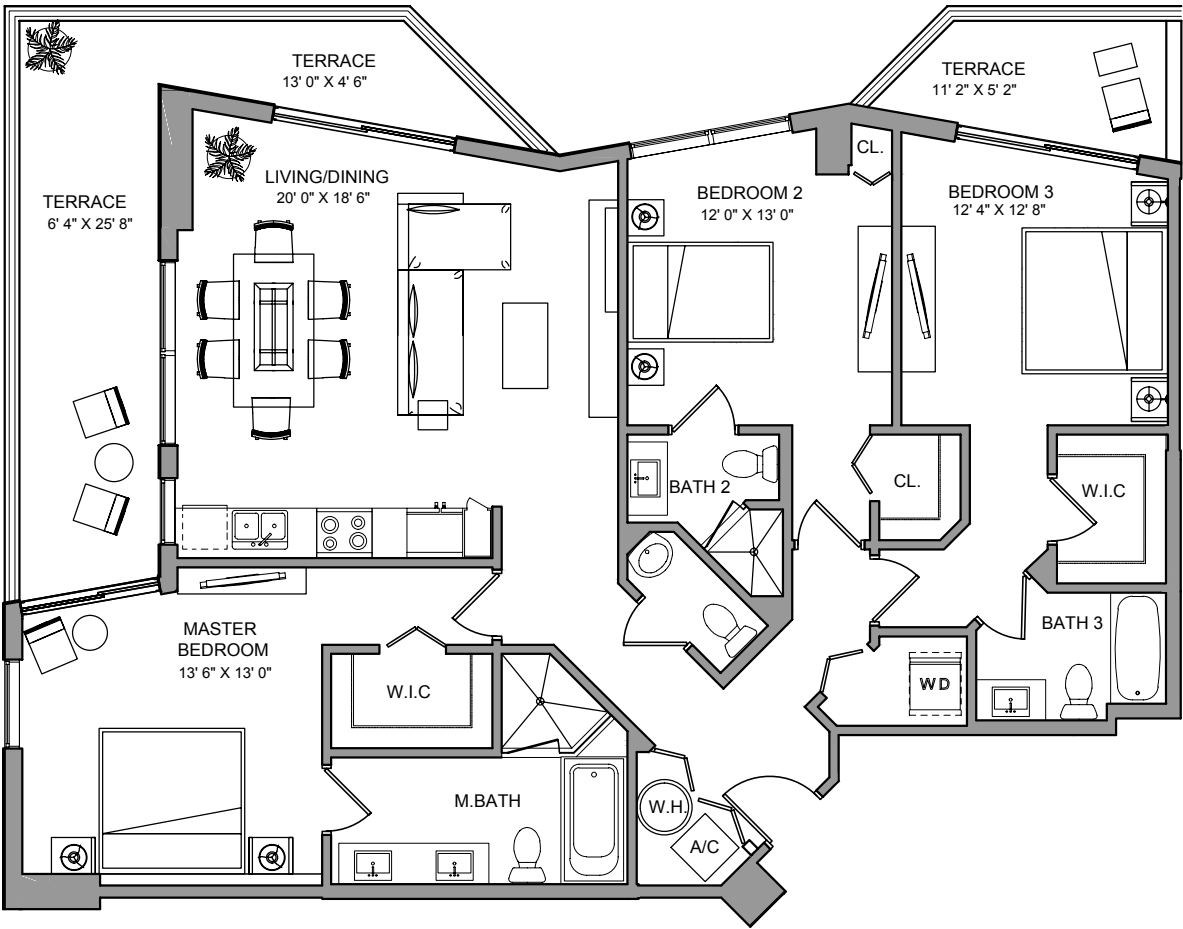
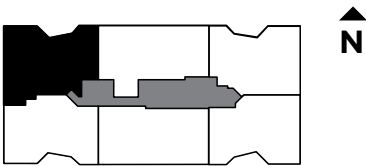


SALES AND MARKETING BY
ONEWORLD
PROPERTIES

These drawings are conceptual only and are for the convenience of reference. They should not be relied upon as representations, express or implied, of the final detail of the residences. Units shown are examples of unit types and may not depict actual units. Stated square footages are ranges for a particular unit type and are measured to the exterior boundaries of the exterior walls and the centerline of interior demising walls and in fact vary from the area that would be determined by using the description and definition of the "Unit" set forth in the Declaration (which generally only includes the interior airspace between the perimeter walls and excludes interior structural components).

PH & LP FIVE
3 BEDROOMS / 3 1/2 BATH

INTERIOR.....	1,538 sq ft	143 m ²
TERRACE.....	328 sq ft	30 m ²
<hr/>		
TOTAL	1,866 sq ft	173 m ²



SALES AND MARKETING BY
ONEWORLD
PROPERTIES

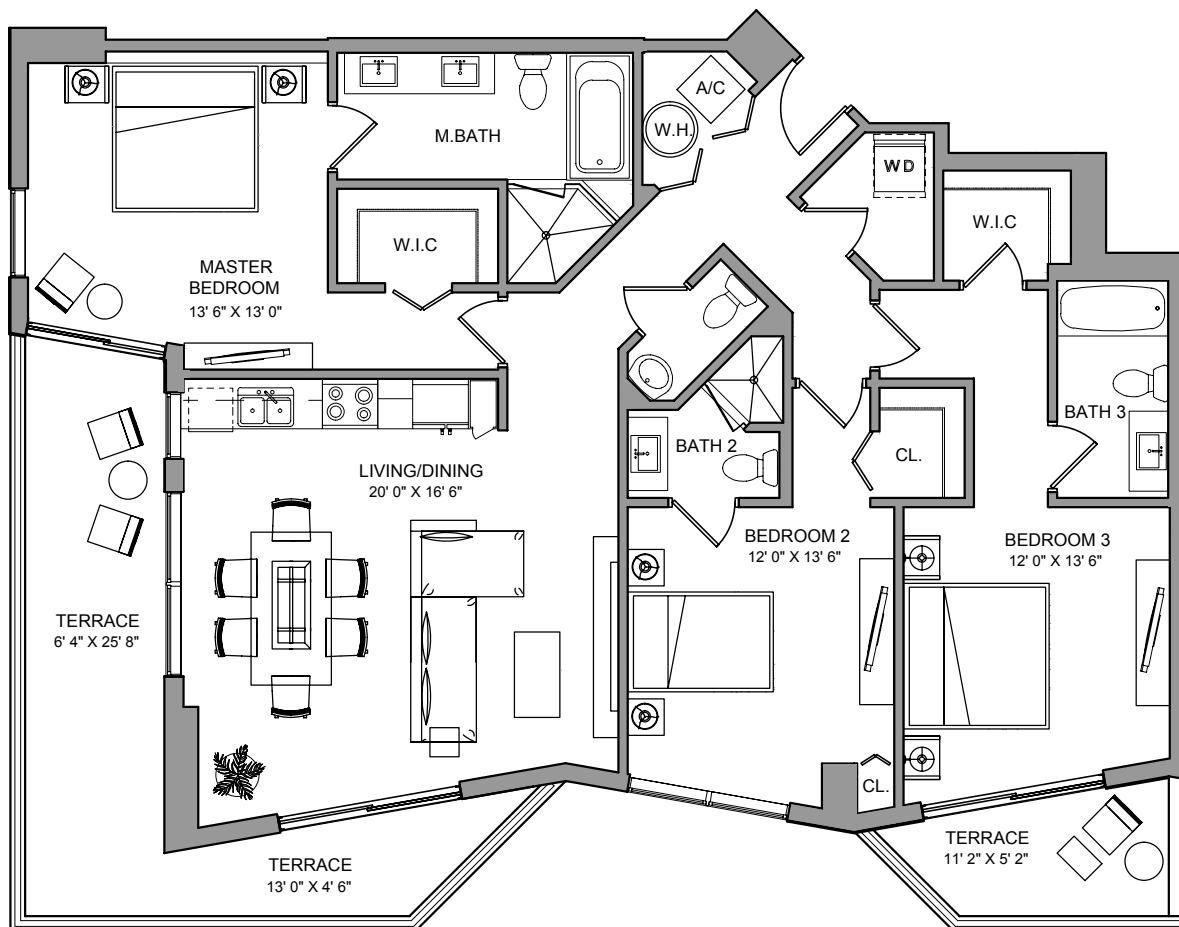
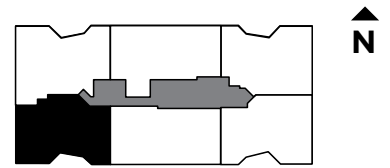
PH & LP SIX

3 BEDROOMS / 3 1/2 BATH

INTERIOR.....1,565 sq ft 145 m²

TERRACE..... 327 sq ft 30 m²

TOTAL **1,892 sq ft 175 m²**



SALES AND MARKETING BY
ONEWORLD
PROPERTIES



These drawings are conceptual only and are for the convenience of reference. They should not be relied upon as representations, express or implied, of the final detail of the residences. Units shown are examples of unit types and may not depict actual units. Stated square footages are ranges for a particular unit type and are measured to the exterior boundaries of the exterior walls and the centerline of interior demising walls and in fact vary from the area that would be determined by using the description and definition of the "Unit" set forth in the Declaration (which generally only includes the interior airspace between the perimeter walls and excludes interior structural components).