

Residence 01

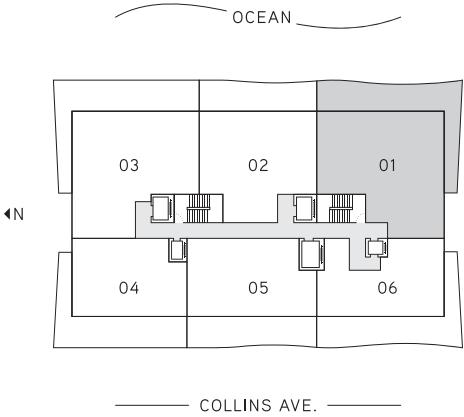
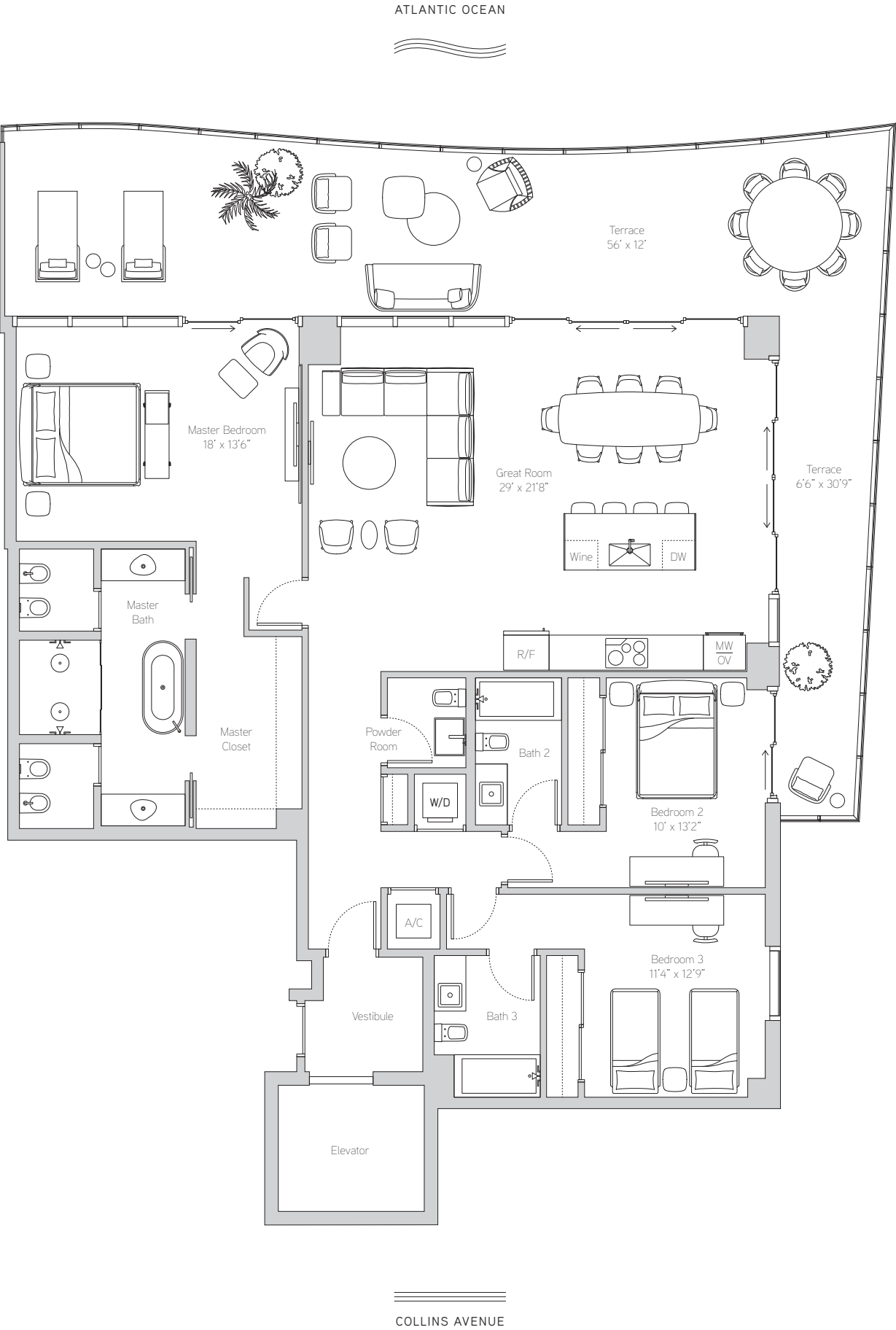
Floors 4-14

3 Bedrooms
3.5 Bathrooms

Interior
2,104 ft² / 195 m²

Exterior
801 ft² / 74 m²

Total
2,905 ft² / 270 m²



Contact
5775 Collins Avenue
Miami Beach, FL 33140

Residence 02

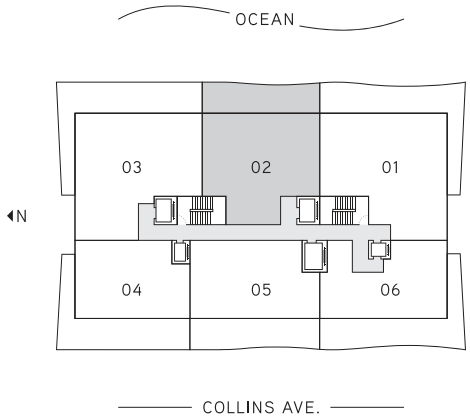
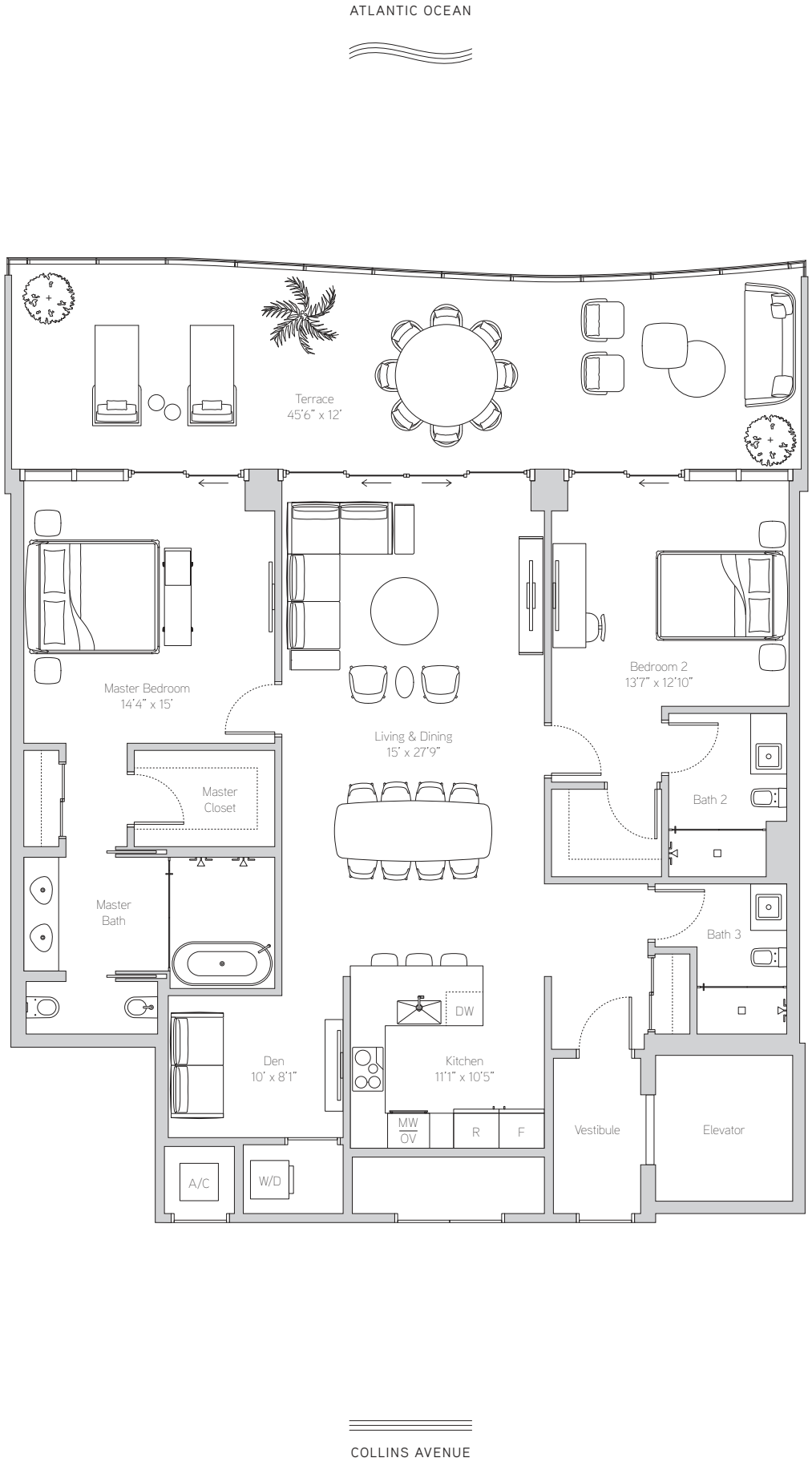
Floors 3-18

2 Bedrooms + Den
3 Bathrooms

Interior
1,728 ft² / 161 m²

Exterior
520 ft² / 48 m²

Total
2,248 ft² / 209 m²



Contact
5775 Collins Avenue
Miami Beach, FL 33140

Residence 03

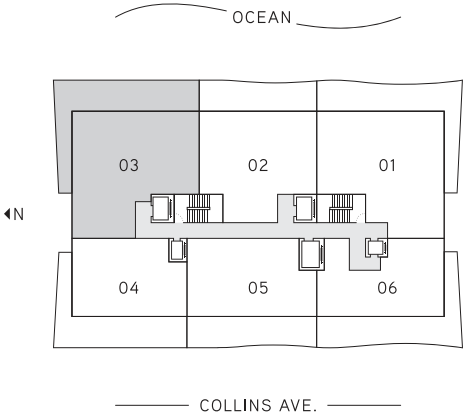
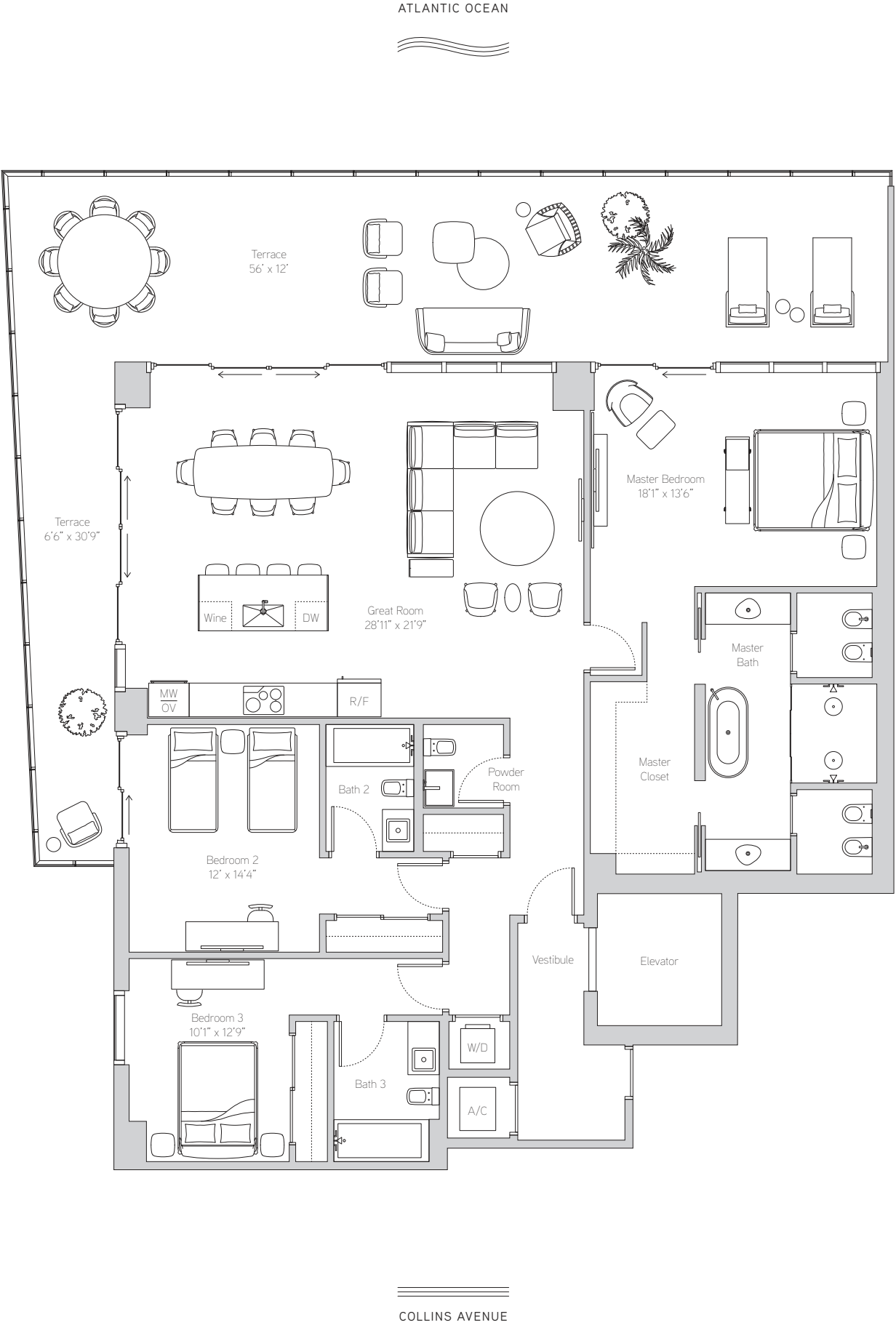
Floors 4-14

3 Bedrooms
3.5 Bathrooms

Interior
2,153 ft² / 200 m²

Exterior
846 ft² / 79 m²

Total
2,999 ft² / 279 m²



Contact
5775 Collins Avenue
Miami Beach, FL 33140

Residence 04

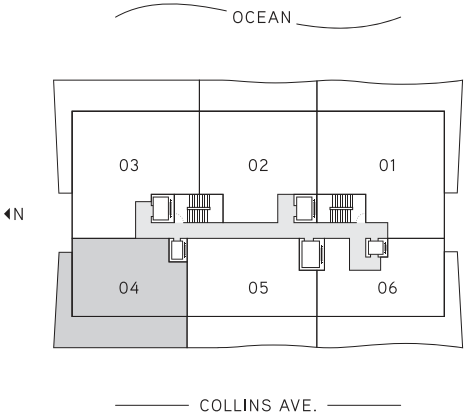
Floors 4-14

2 Bedrooms
2.5 Bathrooms

Interior
1,321 ft² / 123 m²

Exterior
822 ft² / 76 m²

Total
2,143 ft² / 199 m²



Contact
5775 Collins Avenue
Miami Beach, FL 33140

Residence 05

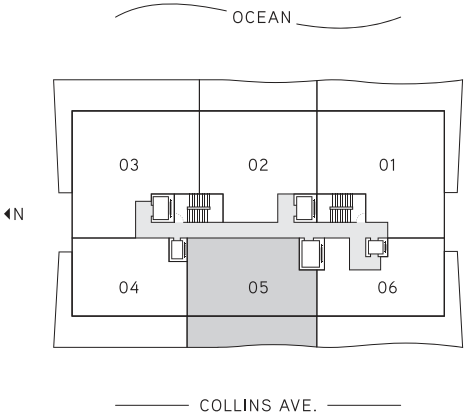
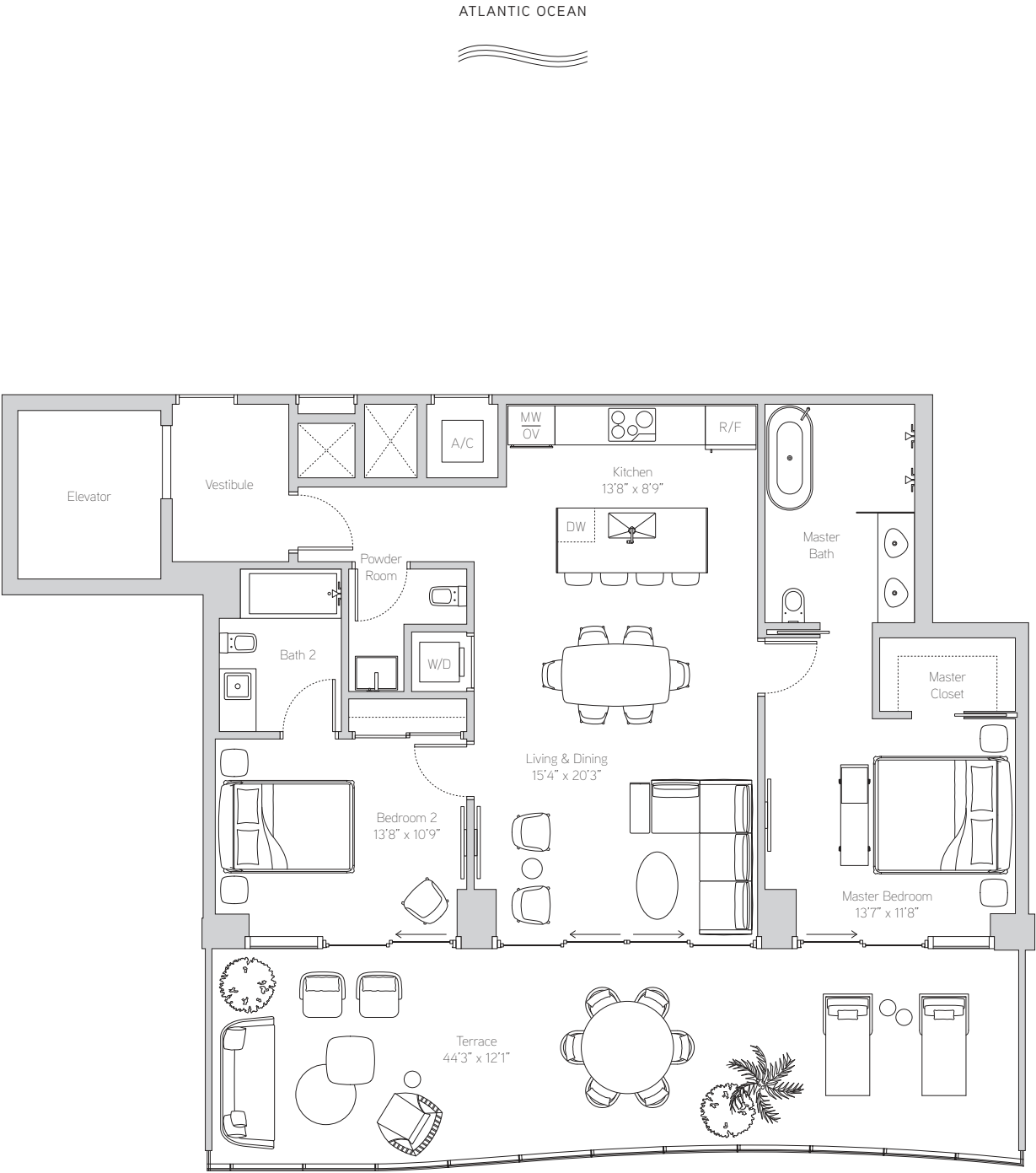
Floors 4-18

2 Bedrooms
2.5 Bathrooms

Interior
1,245 ft² / 116 m²

Exterior
509 ft² / 47 m²

Total
1,754 ft² / 163 m²



Contact
5775 Collins Avenue
Miami Beach, FL 33140

Residence 06

Floors 4-14

2 Bedrooms
2.5 Bathrooms

Interior
1,363 ft² / 127 m²

Exterior
787 ft² / 73 m²

Total
2,150 ft² / 200 m²



Contact
5775 Collins Avenue
Miami Beach, FL 33140

Beach House South

Floor 3

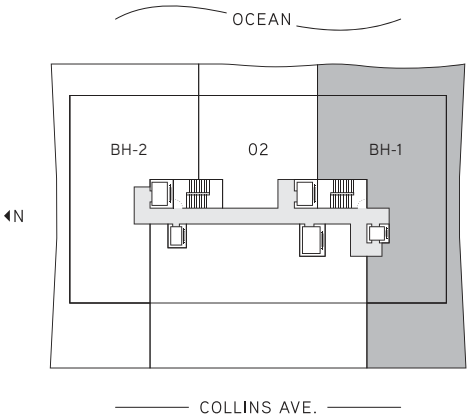
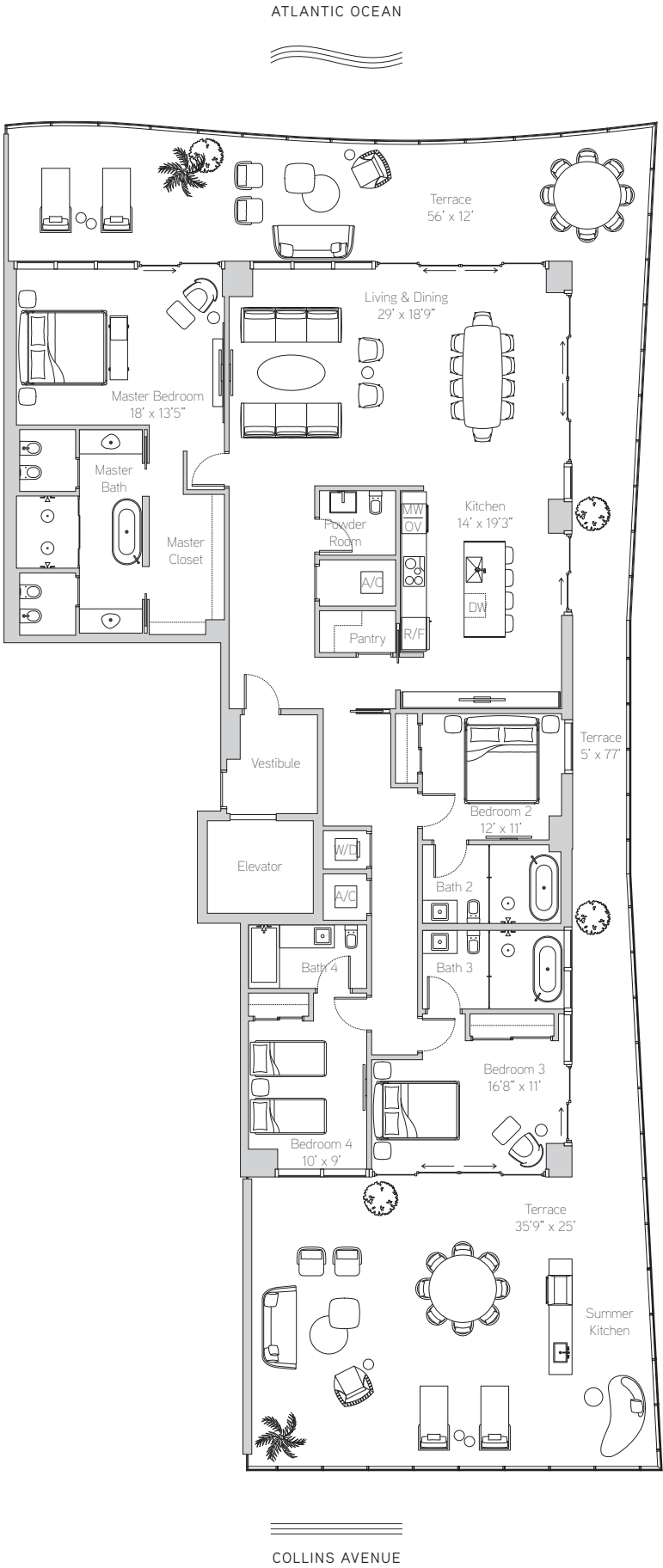
4 Bedrooms
4.5 Bathrooms

Interior
2,904 ft² / 270 m²

Exterior
1,943 ft² / 181 m²

Total
4,847 ft² / 450 m²

Contact
5775 Collins Avenue
Miami Beach, FL 33140



Stated square footages and dimensions are measured to the exterior boundaries of the exterior walls and the centerline of interior demising walls and in fact vary from the square footage and dimensions that would be determined by using the description and definition of the "Unit" set forth in the Declaration (which generally only includes the interior airspace between the perimeter walls and excludes all interior structural components and other common elements). For your reference, the area of the Unit, determined in accordance with these defined unit boundaries, is as set forth on Exhibit "3" to the Declaration of Condominium contained in the Prospectus. Measurements of rooms set forth on this floor plan are generally taken at the farthest points of each given room (as if the room were a perfect rectangle), without regard for any cutouts or variations. Accordingly, the area of the actual room will typically be smaller than the product obtained by multiplying the stated length and width. All dimensions are estimates which will vary with actual construction, and all floor plans, specifications and other development plans are subject to change and will not necessarily accurately reflect the final plans and specifications for the development. All depictions of appliances, counters, soffits, floor coverings, furniture and other matters of detail, including, without limitation, items of finish and decoration, are conceptual only and are not necessarily included in each Unit. ORAL REPRESENTATIONS CANNOT BE RELIED UPON AS CORRECTLY STATING THE REPRESENTATIONS OF THE DEVELOPER. FOR CORRECT REPRESENTATIONS, REFERENCE SHOULD BE MADE TO THE DOCUMENTS REQUIRED BY SECTION 718.503, FLORIDA STATUTES, TO BE FURNISHED BY A DEVELOPER TO A BUYER OR LESSEE. These materials are not intended to be an offer to sell, or solicitation to buy a unit in the condominium. **Floor plan not to scale.**

Beach House North

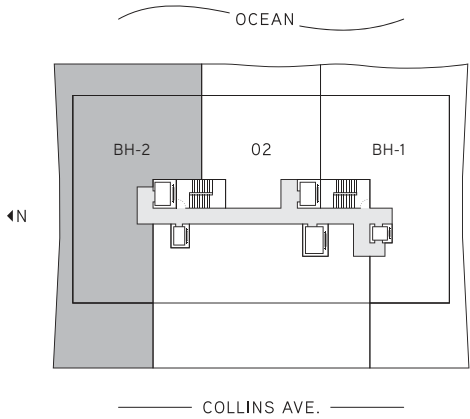
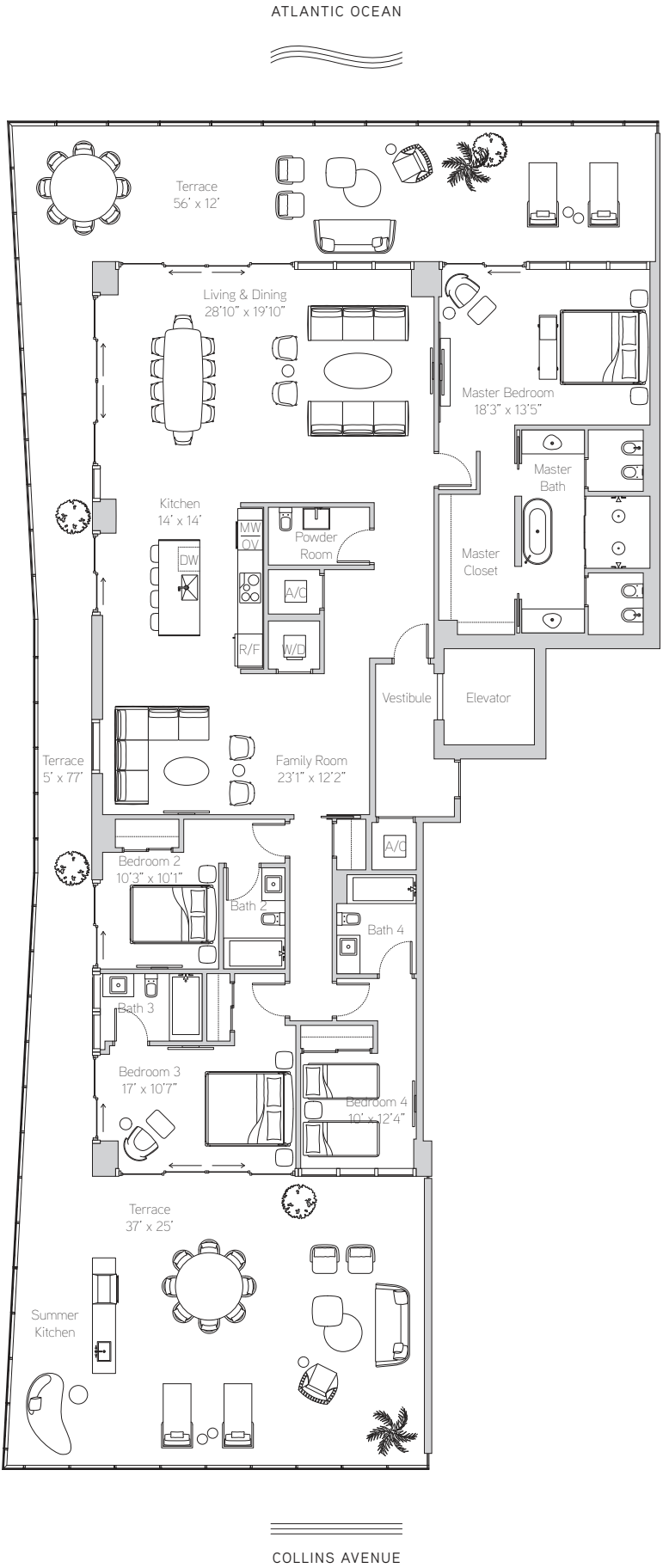
Floor 3

4 Bedrooms
4.5 Bathrooms

Interior
2,963 ft² / 275 m²

Exterior
2,014 ft² / 187 m²

Total
4,977 ft² / 462 m²



Contact
5775 Collins Avenue
Miami Beach, FL 33140

Sky Residence South

Floors 15-18

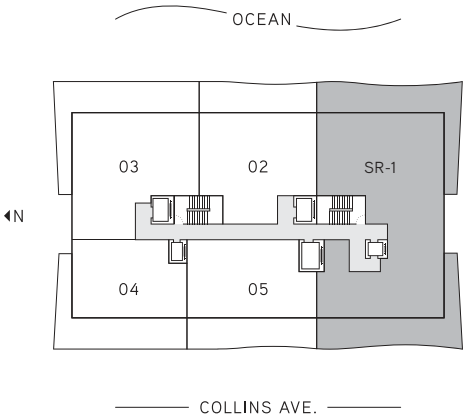
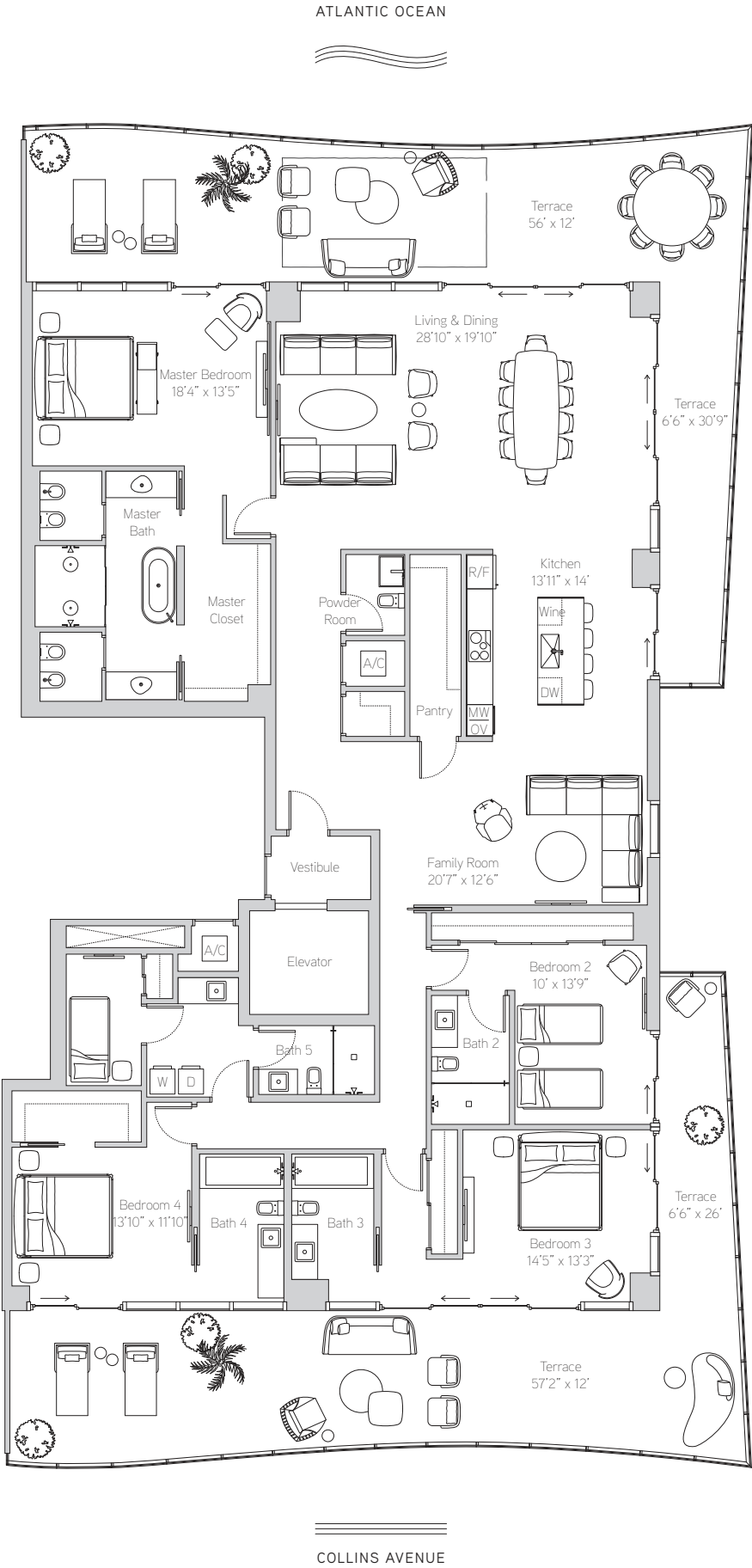
4 Bedrooms
5.5 Bathrooms

Interior
3,443 ft² / 320 m²

Exterior
1,581 ft² / 147 m²

Total
5,024 ft² / 467 m²

Contact
5775 Collins Avenue
Miami Beach, FL 33140



Stated square footages and dimensions are measured to the exterior boundaries of the exterior walls and the centerline of interior demising walls and in fact vary from the square footage and dimensions that would be determined by using the description and definition of the "Unit" set forth in the Declaration (which generally only includes the interior airspace between the perimeter walls and excludes all interior structural components and other common elements). For your reference, the area of the Unit, determined in accordance with these defined unit boundaries, is as set forth on Exhibit "3" to the Declaration of Condominium contained in the Prospectus. Measurements of rooms set forth on this floor plan are generally taken at the farthest points of each given room (as if the room were a perfect rectangle), without regard for any cutouts or variations. Accordingly, the area of the actual room will typically be smaller than the product obtained by multiplying the stated length and width. All dimensions are estimates which will vary with actual construction, and all floor plans, specifications and other development plans are subject to change and will not necessarily accurately reflect the final plans and specifications for the development. All depictions of appliances, counters, soffits, floor coverings, furniture and other matters of detail, including, without limitation, items of finish and decoration, are conceptual only and are not necessarily included in each Unit. ORAL REPRESENTATIONS CANNOT BE RELIED UPON AS CORRECTLY STATING THE REPRESENTATIONS OF THE DEVELOPER. FOR CORRECT REPRESENTATIONS, REFERENCE SHOULD BE MADE TO THE DOCUMENTS REQUIRED BY SECTION 718.503, FLORIDA STATUTES, TO BE FURNISHED BY A DEVELOPER TO A BUYER OR LESSEE. These materials are not intended to be an offer to sell, or solicitation to buy a unit in the condominium. **Floor plan not to scale.**

Sky Residence North

Floors 15-18

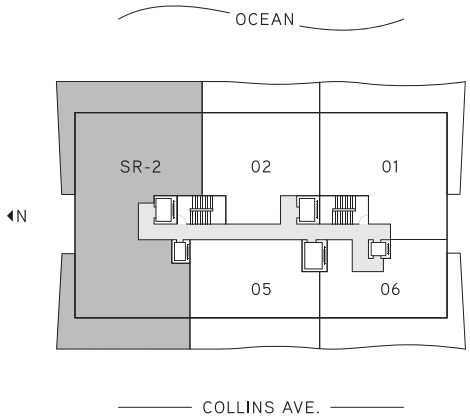
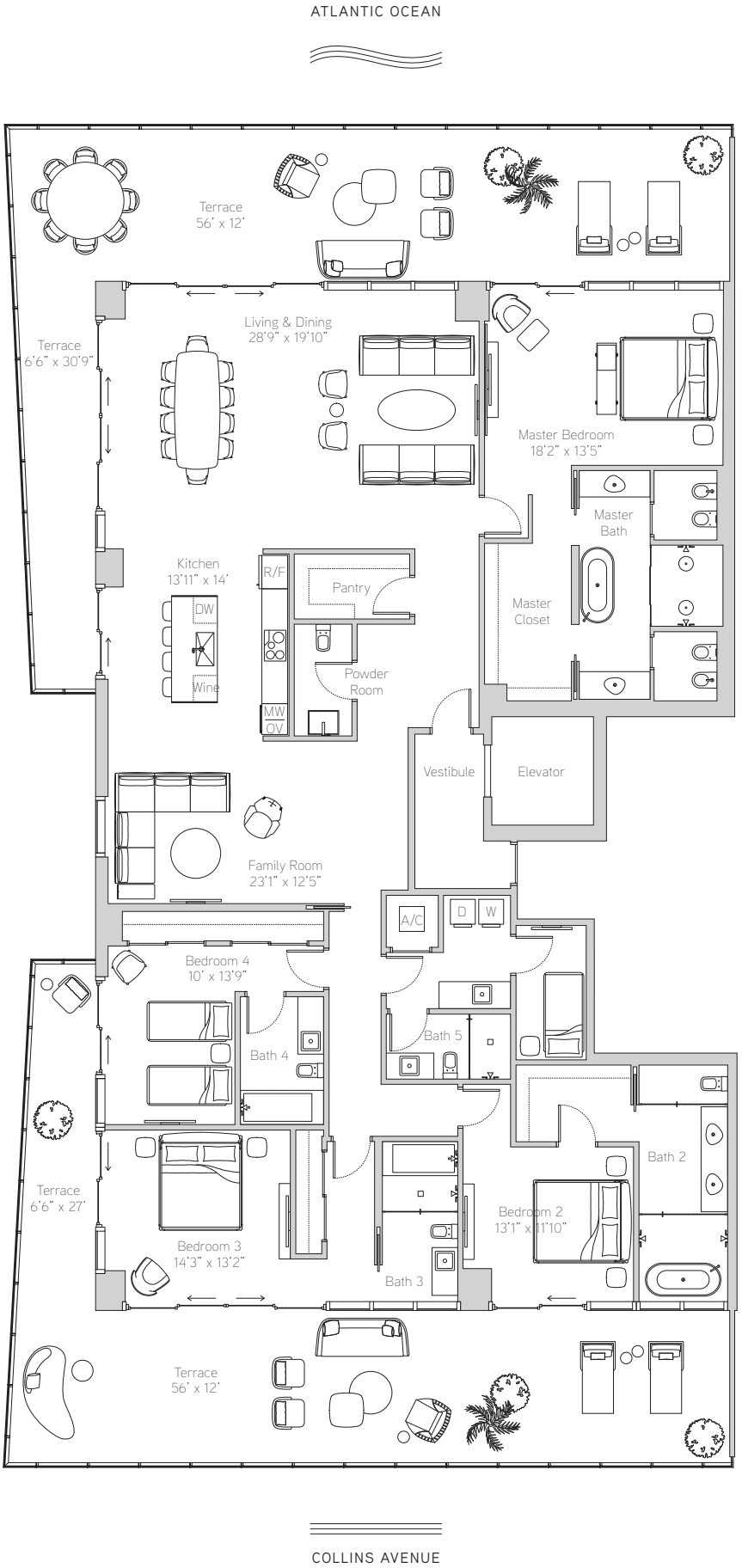
4 Bedrooms
5.5 Bathrooms

Interior
3,474 ft² / 323 m²

Exterior
1,661 ft² / 154 m²

Total
5,135 ft² / 477 m²

Contact
5775 Collins Avenue
Miami Beach, FL 33140



Stated square footages and dimensions are measured to the exterior boundaries of the exterior walls and the centerline of interior demising walls and in fact vary from the square footage and dimensions that would be determined by using the description and definition of the "Unit" set forth in the Declaration (which generally only includes the interior airspace between the perimeter walls and excludes all interior structural components and other common elements). For your reference, the area of the Unit, determined in accordance with these defined unit boundaries, is as set forth on Exhibit "3" to the Declaration of Condominium contained in the Prospectus. Measurements of rooms set forth on this floor plan are generally taken at the farthest points of each given room (as if the room were a perfect rectangle), without regard for any cutouts or variations. Accordingly, the area of the actual room will typically be smaller than the product obtained by multiplying the stated length and width. All dimensions are estimates which will vary with actual construction, and all floor plans, specifications and other development plans are subject to change and will not necessarily accurately reflect the final plans and specifications for the development. All depictions of appliances, counters, soffits, floor coverings, furniture and other matters of detail, including, without limitation, items of finish and decoration, are conceptual only and are not necessarily included in each Unit. ORAL REPRESENTATIONS CANNOT BE RELIED UPON AS CORRECTLY STATING THE REPRESENTATIONS OF THE DEVELOPER. FOR CORRECT REPRESENTATIONS, REFERENCE SHOULD BE MADE TO THE DOCUMENTS REQUIRED BY SECTION 718.503, FLORIDA STATUTES, TO BE FURNISHED BY A DEVELOPER TO A BUYER OR LESSEE. These materials are not intended to be an offer to sell, or solicitation to buy a unit in the condominium. **Floor plan not to scale.**

Penthouse South

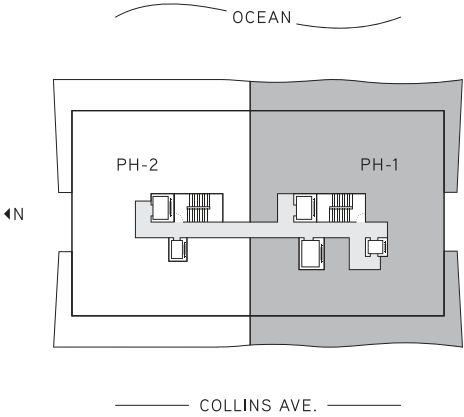
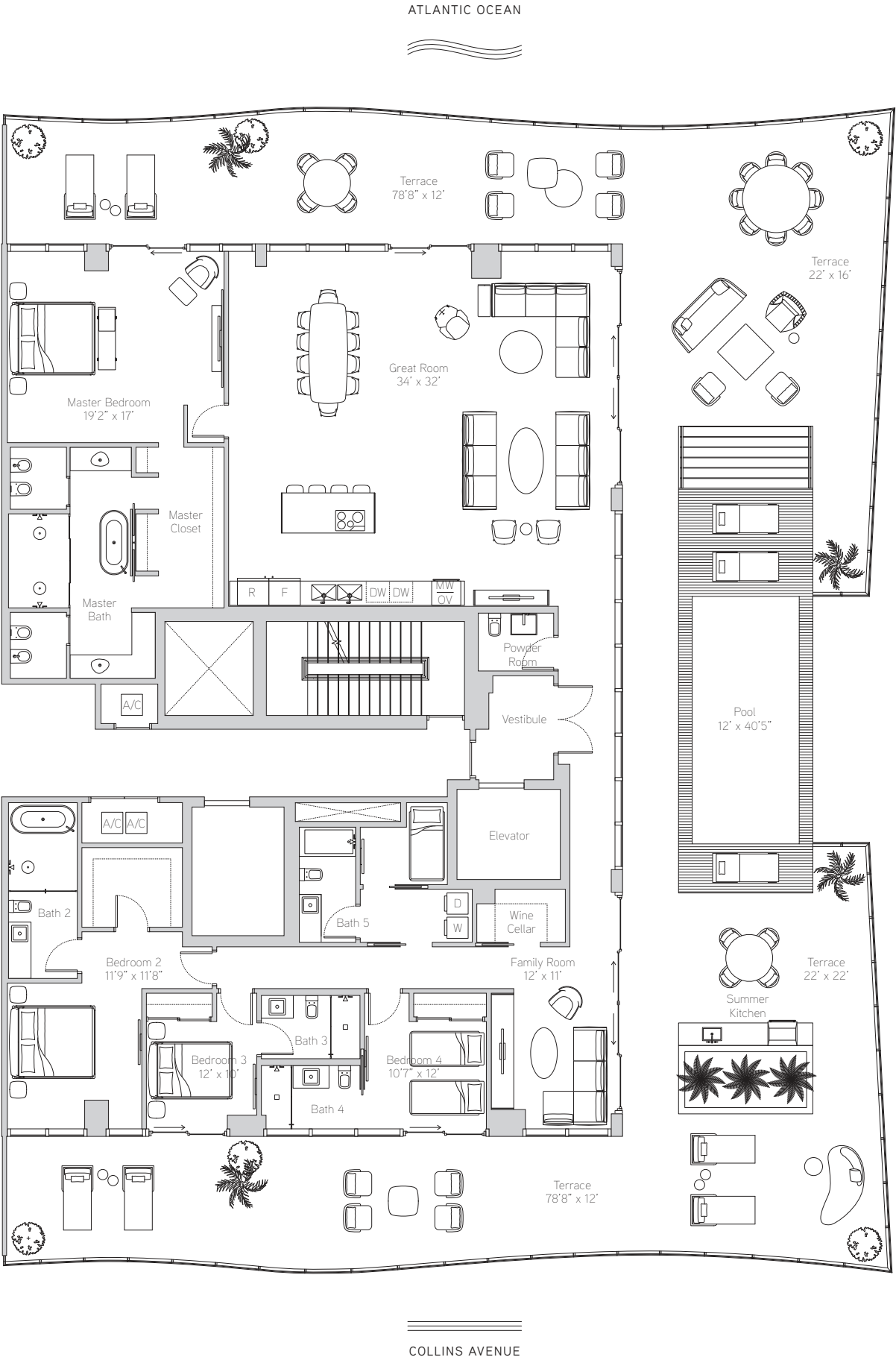
Floor 19

4 Bedrooms
5.5 Bathrooms

Interior
3,523 ft² / 327 m²

Exterior
3,406 ft² / 316 m²

Total
6,929 ft² / 644 m²



Contact
5775 Collins Avenue
Miami Beach, FL 33140

Penthouse North

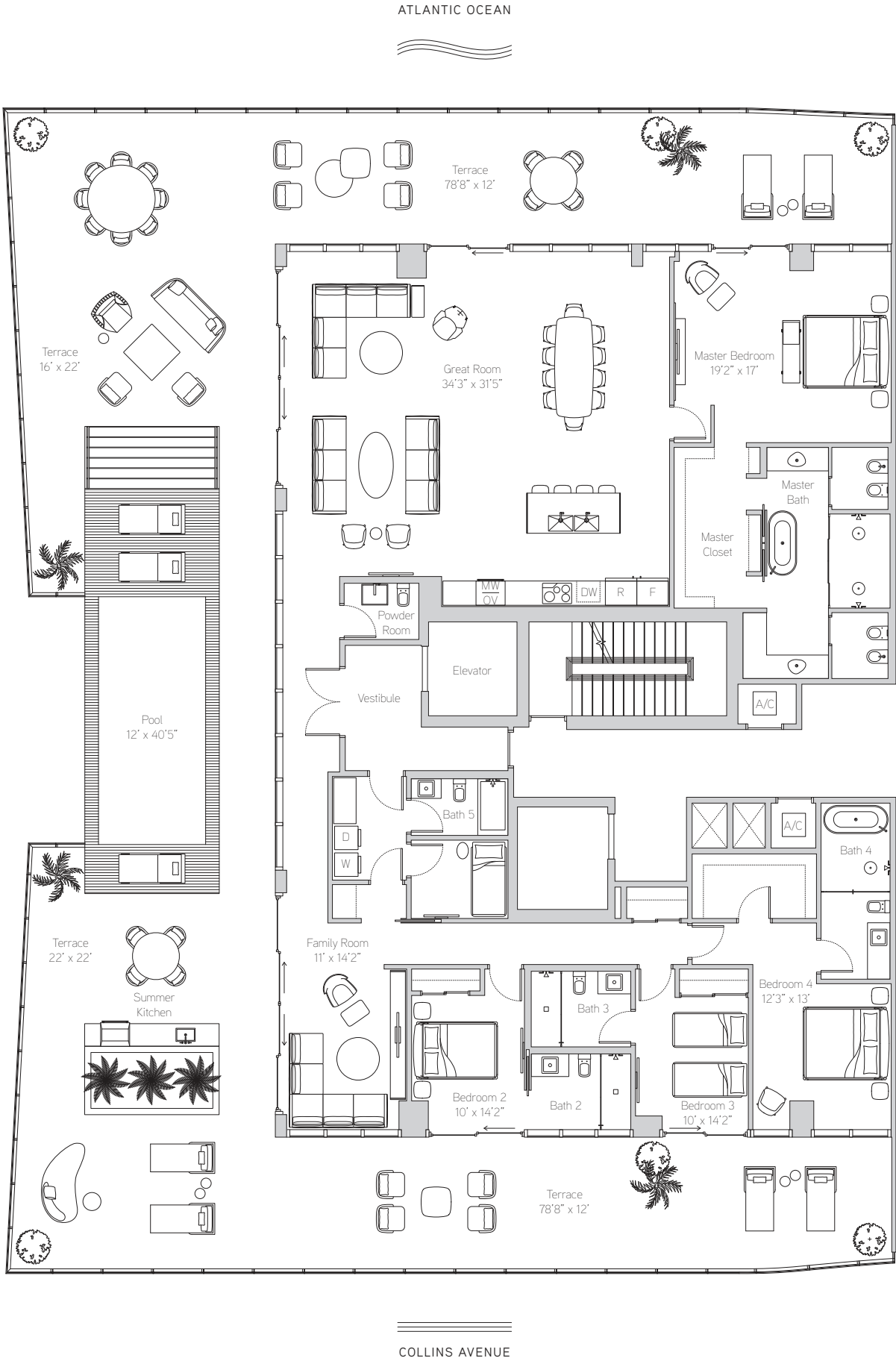
Floor 19

4 Bedrooms
5.5 Bathrooms

Interior
3,623 ft² / 337 m²

Exterior
3,529 ft² / 328 m²

Total
7,152 ft² / 664 m²



Contact
5775 Collins Avenue
Miami Beach, FL 33140

